

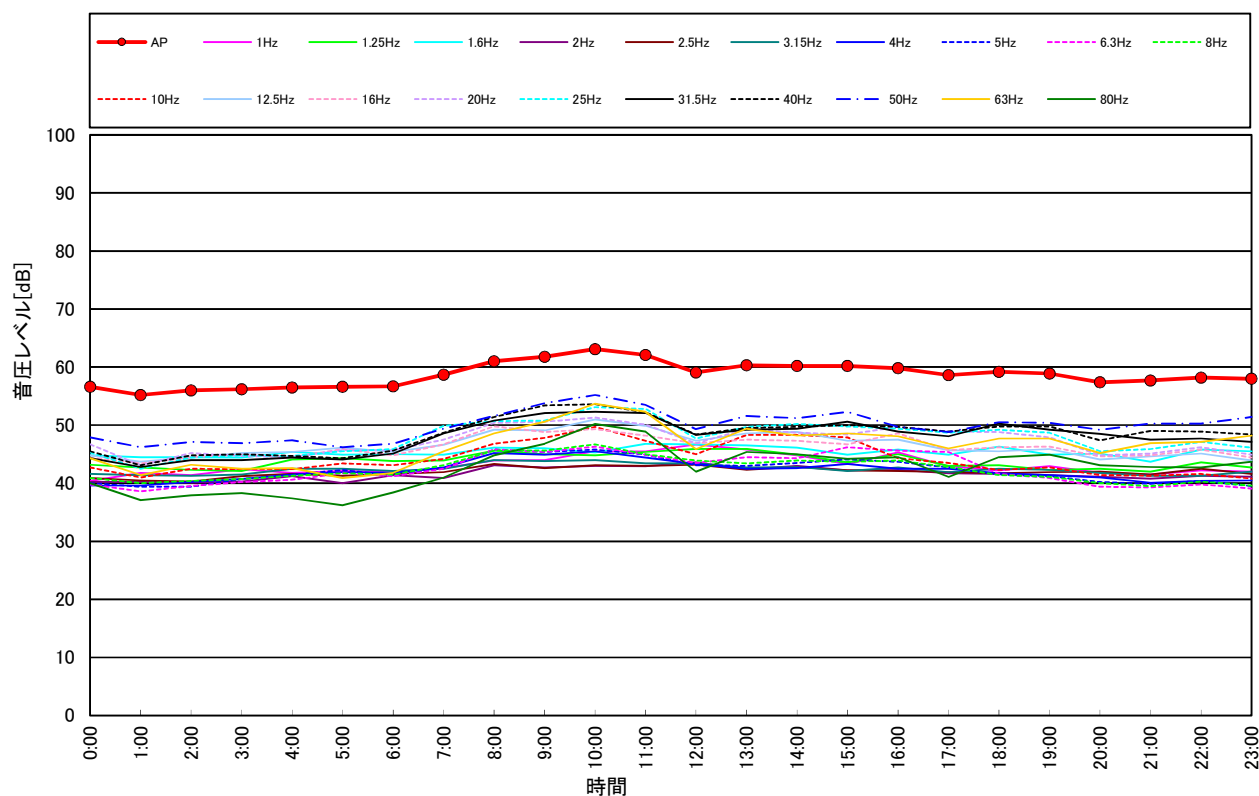
### 3.4 低周波音調査結果

## 低周波音測定結果(L<sub>50</sub>値)(平日)

調査期間: 令和元年11月27日(水)  
 調査地点: 地点①

単位: dB

時刻	L <sub>50</sub>	1/3オクターブバンド中心周波数 [Hz]																			
		1	1.25	1.6	2	2.5	3.15	4	5	6.3	8	10	12.5	16	20	25	31.5	40	50	63	80
0:00	56.6	40.4	43.2	44.8	40.2	40.9	41.6	39.6	40.0	39.8	40.9	42.7	44.8	44.4	46.7	45.3	44.3	45.5	47.9	44.3	40.0
1:00	55.2	41.8	42.7	44.5	40.2	40.5	41.4	39.6	39.4	38.6	40.0	41.0	43.7	43.4	43.1	42.5	42.8	43.1	46.2	41.4	37.1
2:00	56.0	41.4	42.3	44.5	40.1	40.3	41.3	40.2	39.4	39.5	40.4	42.5	44.4	44.5	45.2	44.4	44.0	44.8	47.1	43.2	37.9
3:00	56.2	42.4	42.1	44.4	40.3	41.2	41.5	40.7	40.7	40.2	40.7	42.4	45.2	44.9	44.7	44.8	44.0	45.0	46.9	42.5	38.3
4:00	56.5	41.8	44.1	45.4	41.2	41.6	42.5	41.5	41.4	40.6	41.3	42.4	45.4	44.5	44.5	44.7	44.4	44.7	47.4	42.6	37.4
5:00	56.6	42.1	44.3	44.9	40.0	41.3	42.5	41.9	42.3	41.7	41.7	43.4	46.1	45.9	45.7	45.5	44.1	44.3	46.2	40.9	36.2
6:00	56.7	41.9	43.8	45.0	41.4	41.6	42.1	41.8	41.3	41.2	41.5	43.1	45.4	44.8	45.7	45.9	45.1	45.6	46.8	41.8	38.4
7:00	58.7	42.6	43.9	44.9	40.9	41.9	42.5	42.7	42.6	42.5	43.1	44.2	46.6	46.7	47.5	49.9	48.6	48.7	49.4	45.5	41.0
8:00	61.0	43.9	45.6	46.1	43.1	43.3	44.0	45.2	45.8	45.8	45.6	46.8	49.2	49.8	50.4	50.7	50.8	51.4	51.6	48.6	44.8
9:00	61.8	44.0	45.0	46.0	42.7	42.6	43.8	44.9	45.4	45.4	45.6	47.8	49.1	48.8	50.6	50.8	52.1	53.4	53.8	50.6	46.8
10:00	63.1	45.5	44.8	45.3	43.0	43.1	44.0	45.5	45.8	46.3	46.7	49.7	51.0	49.3	51.3	53.1	52.3	53.6	55.2	53.7	50.2
11:00	62.1	45.5	45.4	46.8	42.9	43.0	43.4	44.4	44.9	44.9	45.0	47.3	49.9	48.2	50.1	52.8	52.1	52.2	53.5	52.3	48.9
12:00	59.1	46.7	45.9	46.7	43.6	43.2	43.4	43.3	43.1	43.5	43.9	45.0	47.3	46.9	46.9	47.7	48.3	48.4	49.3	45.9	42.0
13:00	60.3	45.8	45.9	46.5	42.4	42.3	42.7	42.5	43.0	44.5	43.4	48.3	48.6	47.5	49.3	49.7	49.2	49.5	51.6	49.4	45.4
14:00	60.2	44.8	44.9	46.1	43.0	42.8	42.8	42.6	43.5	44.3	43.9	48.3	48.8	47.3	48.7	50.2	49.4	49.7	51.2	48.2	45.0
15:00	60.2	43.3	43.6	44.9	42.2	42.2	42.1	43.3	44.1	46.2	43.7	47.9	47.3	46.7	48.4	49.8	50.6	50.0	52.3	48.6	44.2
16:00	59.8	45.3	45.0	45.8	42.3	42.1	42.7	42.5	43.7	45.6	43.9	44.3	47.5	48.6	49.7	49.4	48.9	49.7	49.7	48.1	44.5
17:00	58.6	42.9	43.0	44.9	41.7	41.9	41.9	42.5	42.7	45.4	42.8	43.5	45.7	45.7	48.9	48.7	48.1	48.9	48.8	46.0	41.1
18:00	59.2	42.2	43.1	46.3	41.6	41.7	42.5	41.7	41.5	41.6	41.4	42.3	45.5	46.2	48.8	49.2	50.3	49.8	50.5	47.7	44.5
19:00	58.9	42.9	42.3	44.9	41.4	41.9	42.3	41.4	41.2	40.9	41.1	42.7	45.9	46.3	47.9	48.7	49.2	49.8	50.4	47.7	44.9
20:00	57.4	41.8	42.5	45.1	41.1	42.0	41.8	41.0	40.2	39.4	40.0	41.4	44.1	44.6	44.8	45.5	48.5	47.4	49.2	45.2	43.1
21:00	57.7	41.5	42.0	43.7	40.8	41.5	41.3	40.1	39.9	39.3	39.5	41.3	44.6	44.8	45.1	45.9	47.5	49.0	50.3	46.9	42.8
22:00	58.2	42.2	43.6	45.8	41.3	42.5	41.3	40.4	40.4	39.8	40.3	41.6	45.1	45.8	46.2	47.1	47.7	48.9	50.3	47.1	42.7
23:00	58.0	42.0	42.7	45.5	41.1	41.6	42.0	40.5	39.5	39.1	39.6	40.8	43.9	44.4	44.9	46.1	47.1	48.4	51.4	48.2	43.7



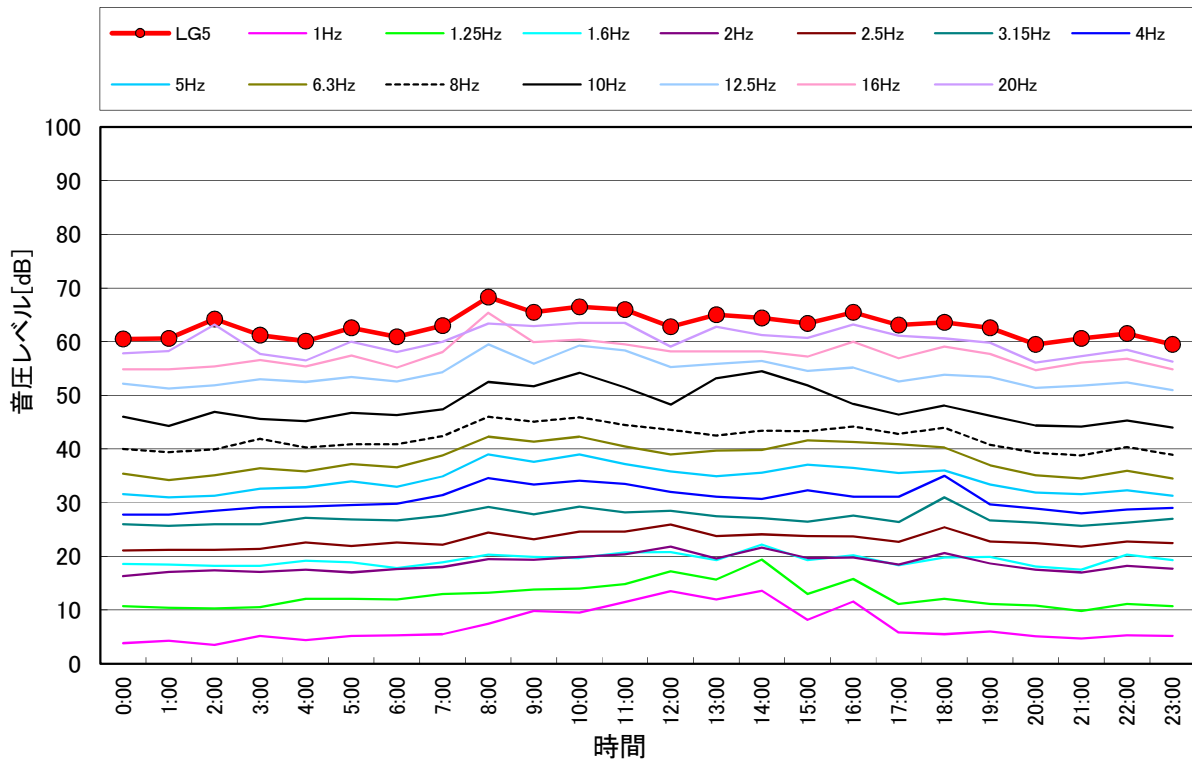
# 低周波音測定結果 ( $L_{G5}$ 値) (平日)

調査期間: 令和元年11月27日 (水)

調査地点: 地点①

単位: dB

時刻	$L_{G5}$	1/3オクターブバンド中心周波数[Hz]													
		1	1.25	1.6	2	2.5	3.15	4	5	6.3	8	10	12.5	16	20
0:00	60.5	3.8	10.7	18.6	16.3	21.1	26.0	27.8	31.6	35.4	40.0	46.0	52.2	54.9	57.8
1:00	60.6	4.3	10.4	18.5	17.1	21.2	25.7	27.8	31.0	34.2	39.4	44.3	51.3	54.9	58.3
2:00	64.2	3.5	10.3	18.2	17.4	21.2	26.0	28.5	31.3	35.1	39.9	46.9	51.9	55.4	63.2
3:00	61.2	5.2	10.5	18.2	17.1	21.4	26.0	29.1	32.6	36.4	41.9	45.6	53.0	56.6	57.7
4:00	60.1	4.4	12.1	19.2	17.5	22.6	27.2	29.3	32.9	35.8	40.3	45.2	52.5	55.4	56.5
5:00	62.6	5.2	12.1	18.9	17.0	21.9	26.9	29.6	34.0	37.2	40.9	46.7	53.4	57.4	60.0
6:00	60.9	5.3	12.0	17.8	17.6	22.6	26.7	29.8	33.0	36.6	40.9	46.3	52.6	55.2	58.1
7:00	63.0	5.5	13.0	18.9	18.0	22.2	27.6	31.4	34.9	38.8	42.4	47.4	54.3	58.1	60.0
8:00	68.3	7.4	13.2	20.3	19.5	24.4	29.2	34.6	39.0	42.3	46.0	52.5	59.5	65.4	63.4
9:00	65.5	9.8	13.8	19.9	19.4	23.2	27.8	33.4	37.6	41.4	45.1	51.7	55.9	59.9	62.9
10:00	66.5	9.5	14.0	19.7	19.9	24.6	29.3	34.1	39.0	42.3	45.9	54.2	59.3	60.4	63.5
11:00	66.0	11.5	14.8	20.7	20.4	24.6	28.2	33.5	37.2	40.5	44.5	51.5	58.4	59.5	63.5
12:00	62.8	13.5	17.2	20.8	21.8	25.9	28.5	32.0	35.8	39.0	43.6	48.3	55.3	58.2	59.1
13:00	65.0	12.0	15.7	19.3	19.6	23.8	27.5	31.1	34.9	39.7	42.5	53.2	55.9	58.2	62.8
14:00	64.4	13.6	19.4	22.2	21.6	24.1	27.1	30.7	35.6	39.8	43.4	54.5	56.4	58.2	61.2
15:00	63.4	8.2	13.0	19.3	19.7	23.8	26.5	32.3	37.1	41.6	43.3	51.9	54.6	57.2	60.7
16:00	65.5	11.6	15.8	20.2	19.8	23.7	27.6	31.1	36.5	41.3	44.2	48.4	55.2	60.0	63.2
17:00	63.1	5.8	11.1	18.3	18.5	22.7	26.4	31.1	35.5	40.9	42.8	46.4	52.6	56.9	61.1
18:00	63.6	5.5	12.1	19.8	20.6	25.4	31.0	35.0	36.0	40.3	44.0	48.1	53.8	59.1	60.6
19:00	62.6	6.0	11.1	19.9	18.7	22.8	26.7	29.7	33.4	37.0	40.8	46.2	53.4	57.7	59.8
20:00	59.5	5.1	10.8	18.1	17.5	22.5	26.3	28.9	31.9	35.1	39.3	44.4	51.4	54.7	56.1
21:00	60.6	4.7	9.8	17.5	17.0	21.8	25.7	28.0	31.6	34.5	38.8	44.2	51.8	56.1	57.3
22:00	61.5	5.3	11.1	20.3	18.2	22.8	26.3	28.7	32.3	35.9	40.4	45.3	52.4	56.8	58.5
23:00	59.5	5.2	10.7	19.3	17.7	22.5	27.0	29.0	31.3	34.5	38.9	44.0	51.0	54.9	56.3

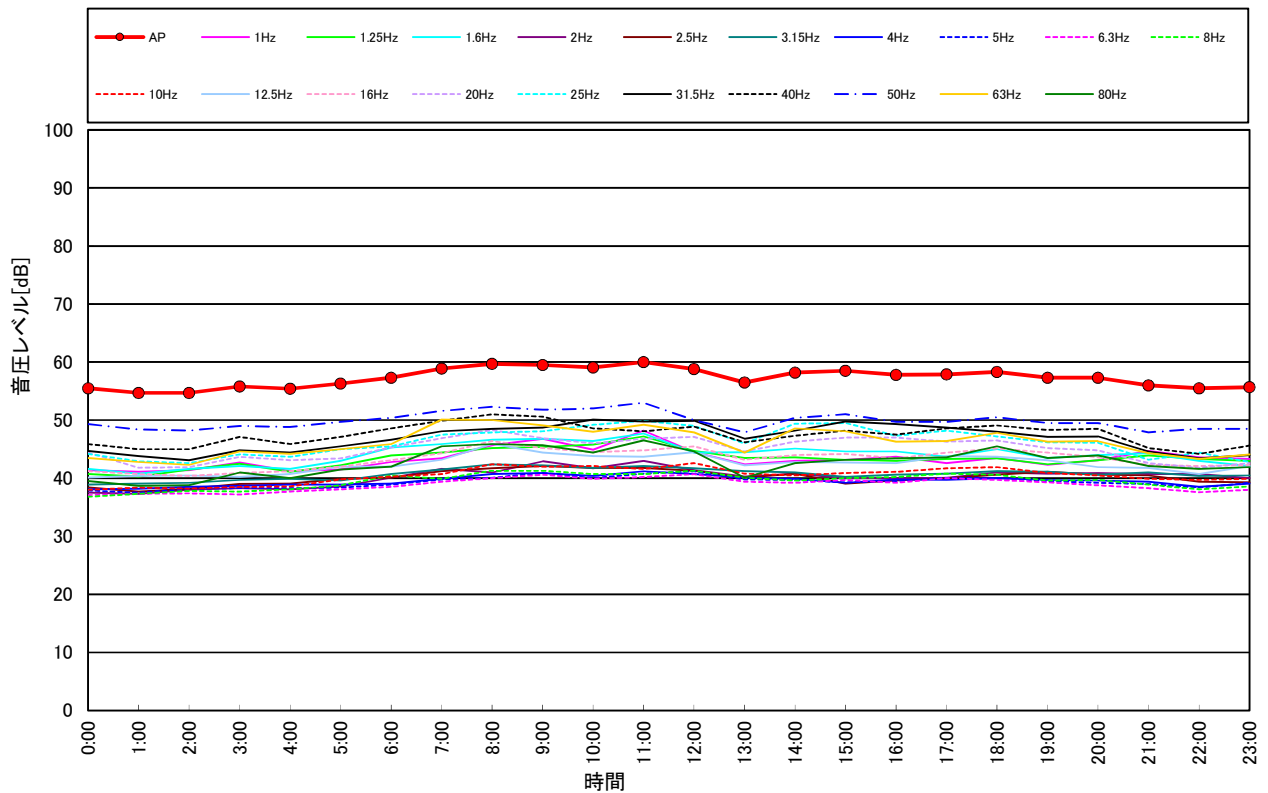


# 低周波音測定結果(L<sub>50</sub>値)(休日)

調査期間: 令和元年12月1日(日)  
 調査地点: 地点①

単位: dB

時刻	L <sub>50</sub>	1/3オクターブバンド中心周波数 [Hz]																			
		1	1.25	1.6	2	2.5	3.15	4	5	6.3	8	10	12.5	16	20	25	31.5	40	50	63	80
0:00	55.5	41.4	40.7	41.6	37.5	38.4	38.9	38.1	37.9	37.1	36.8	38.0	40.1	41.2	44.4	44.2	44.7	45.9	49.3	43.5	39.5
1:00	54.7	41.1	40.3	40.8	37.3	37.7	39.1	38.2	37.5	37.3	37.3	38.4	40.4	40.7	41.8	42.9	43.8	45.0	48.4	42.8	38.7
2:00	54.7	41.4	41.5	41.6	38.0	38.2	39.2	38.5	38.2	37.4	37.8	38.2	40.5	40.4	41.9	42.6	43.1	45.0	48.2	42.3	38.8
3:00	55.8	42.7	42.5	42.1	38.3	39.0	39.7	38.7	38.3	37.2	37.7	38.5	40.2	40.9	43.7	44.1	44.8	47.1	49.0	44.6	41.0
4:00	55.4	41.2	41.1	41.6	38.1	39.1	39.9	38.9	38.3	37.7	38.1	38.6	40.7	41.2	43.1	43.7	44.4	45.9	48.8	44.2	40.0
5:00	56.3	41.5	42.2	43.0	38.6	39.9	39.6	38.9	38.4	38.1	38.8	39.8	42.0	42.0	43.4	45.0	45.5	47.1	49.7	45.0	41.5
6:00	57.3	42.8	43.9	45.3	40.1	40.1	40.7	39.1	38.9	38.5	40.5	40.3	42.0	43.1	45.3	45.5	46.6	48.6	50.4	45.9	42.0
7:00	58.9	43.4	44.4	45.9	41.6	41.2	41.5	39.9	39.8	39.4	39.9	40.7	43.2	44.3	46.9	47.5	48.1	49.9	51.6	50.1	45.5
8:00	59.7	45.7	45.2	46.6	41.0	41.7	42.4	40.7	40.1	40.0	41.3	42.4	45.9	46.4	48.3	47.9	48.5	51.0	52.3	50.0	45.9
9:00	59.5	46.8	45.4	46.8	42.9	42.1	42.2	40.9	40.9	40.6	41.3	42.0	44.4	45.2	46.9	48.1	48.7	50.6	51.8	49.1	45.7
10:00	59.1	44.9	45.8	46.4	41.7	41.8	41.8	40.4	40.0	39.9	40.7	42.1	43.8	44.5	46.0	49.2	50.1	48.6	52.0	48.0	44.4
11:00	60.0	48.2	47.2	47.7	43.0	41.8	42.1	41.2	40.8	40.2	40.7	41.6	43.7	44.8	46.8	49.9	49.8	48.1	53.0	49.2	46.5
12:00	58.8	44.5	44.7	44.4	41.4	41.3	41.7	40.7	41.2	40.7	41.3	42.6	44.5	45.5	47.1	49.0	49.9	48.9	50.0	47.9	44.6
13:00	56.5	42.4	43.5	44.5	40.3	40.1	41.2	40.1	39.8	39.4	40.1	40.8	42.2	43.2	44.6	46.0	46.8	46.2	47.9	44.4	40.1
14:00	58.2	43.0	43.6	45.1	40.8	40.8	41.0	39.9	39.7	39.2	39.6	40.5	42.8	44.0	46.3	49.4	48.2	47.3	50.4	48.6	42.6
15:00	58.5	43.2	43.2	44.6	40.0	39.1	40.2	39.2	39.3	39.7	40.0	40.9	42.7	44.2	47.0	49.5	49.8	48.2	51.0	48.1	43.2
16:00	57.8	43.7	43.0	44.6	40.0	39.6	40.6	39.8	39.5	39.2	40.2	41.1	42.6	43.4	47.0	47.3	49.3	47.5	49.7	46.3	43.4
17:00	57.9	42.6	43.3	43.7	40.1	40.0	40.8	39.7	40.1	40.0	40.8	41.7	43.8	44.4	46.3	48.2	48.7	48.6	49.7	46.4	43.6
18:00	58.3	43.5	43.4	45.0	41.0	40.6	41.2	40.0	40.0	39.7	40.6	41.9	43.7	45.1	46.5	47.2	48.0	49.1	50.5	47.8	45.5
19:00	57.3	42.3	42.4	43.5	40.8	41.1	41.1	39.7	39.5	39.3	39.6	40.9	43.1	44.4	45.2	46.2	47.1	48.3	49.5	46.3	43.5
20:00	57.3	43.1	43.1	44.0	40.9	40.6	40.6	39.6	39.2	38.8	39.7	40.5	41.9	43.6	44.8	46.1	47.2	48.5	49.5	46.4	43.9
21:00	56.0	44.7	43.9	44.3	40.7	40.5	41.0	39.4	39.0	38.3	38.9	39.9	41.8	42.3	42.6	43.2	44.6	45.2	47.9	44.3	42.1
22:00	55.5	43.6	43.3	43.0	40.7	39.4	40.4	38.5	38.4	37.6	38.1	39.7	40.7	42.1	41.8	44.4	43.4	44.2	48.5	43.3	41.6
23:00	55.7	43.3	43.0	42.1	40.0	39.3	40.5	39.1	39.2	38.0	38.6	39.9	42.1	42.3	42.6	42.8	44.0	45.6	48.5	44.1	41.9



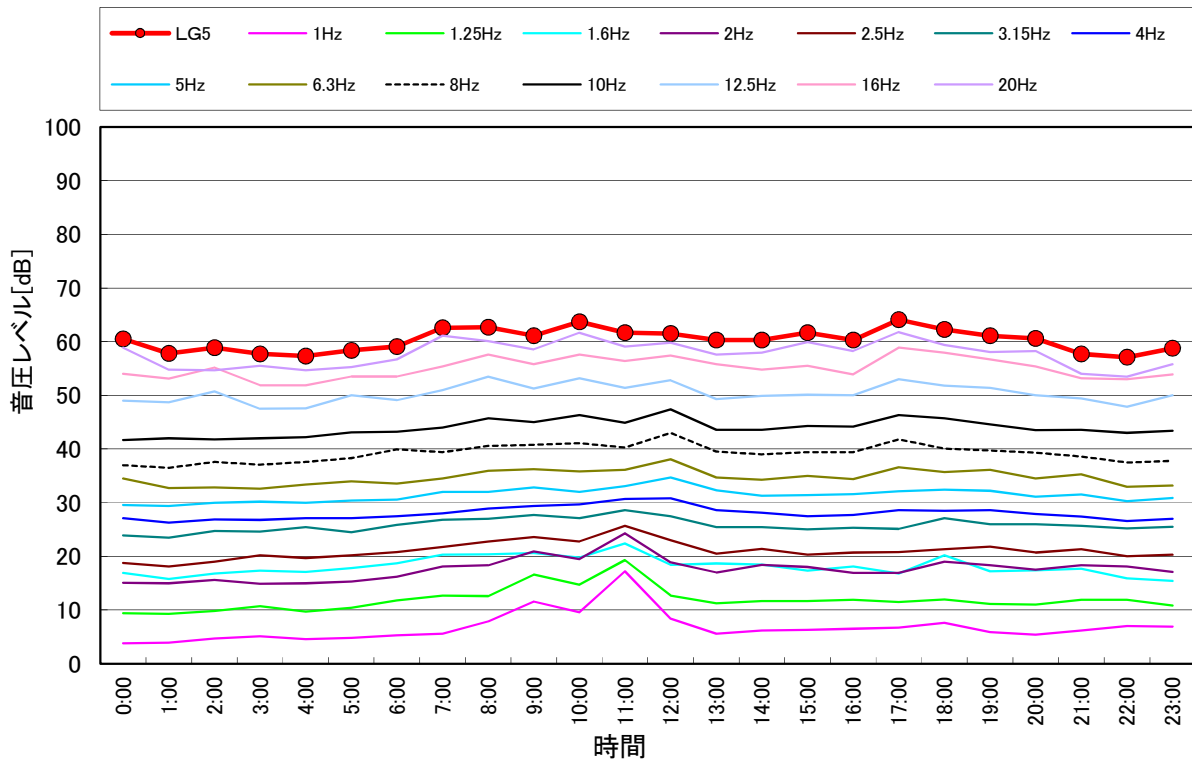
# 低周波音測定結果 ( $L_{G5}$ 値) (休日)

調査期間: 令和元年12月1日 (日)

調査地点: 地点①

単位: dB

時刻	$L_{G5}$	1/3オクターブバンド中心周波数[Hz]													
		1	1.25	1.6	2	2.5	3.15	4	5	6.3	8	10	12.5	16	20
0:00	60.5	3.8	9.4	16.9	15.1	18.8	23.9	27.1	29.6	34.5	37.0	41.7	49.0	54.0	58.9
1:00	57.8	3.9	9.3	15.8	15.0	18.1	23.5	26.3	29.4	32.7	36.5	42.0	48.7	53.1	54.8
2:00	58.9	4.7	9.8	16.8	15.6	19.0	24.7	26.9	30.0	32.8	37.6	41.8	50.7	55.2	54.7
3:00	57.7	5.1	10.7	17.3	14.9	20.2	24.6	26.8	30.2	32.6	37.1	42.0	47.5	51.9	55.5
4:00	57.3	4.6	9.7	17.1	15.0	19.7	25.4	27.1	30.0	33.4	37.6	42.2	47.6	51.9	54.7
5:00	58.4	4.8	10.4	17.8	15.3	20.2	24.5	27.1	30.4	34.0	38.3	43.1	50.0	53.5	55.3
6:00	59.1	5.3	11.8	18.7	16.2	20.8	25.9	27.5	30.6	33.6	39.9	43.2	49.1	53.5	56.7
7:00	62.6	5.6	12.7	20.3	18.1	21.7	26.8	28.0	32.0	34.5	39.4	44.0	51.0	55.4	61.1
8:00	62.7	7.9	12.6	20.4	18.3	22.8	27.0	28.9	32.0	35.9	40.6	45.7	53.5	57.6	60.1
9:00	61.1	11.6	16.6	20.6	20.9	23.6	27.7	29.4	32.8	36.2	40.8	45.0	51.3	55.8	58.6
10:00	63.7	9.6	14.7	19.8	19.5	22.8	27.1	29.7	32.0	35.8	41.1	46.3	53.2	57.6	61.7
11:00	61.7	17.2	19.3	22.4	24.3	25.7	28.6	30.7	33.1	36.1	40.3	44.9	51.4	56.4	59.1
12:00	61.5	8.4	12.7	18.4	18.9	23.0	27.5	30.8	34.7	38.1	43.0	47.4	52.8	57.4	59.8
13:00	60.3	5.6	11.2	18.7	17.0	20.5	25.4	28.6	32.3	34.7	39.5	43.6	49.3	55.8	57.6
14:00	60.3	6.2	11.7	18.5	18.4	21.4	25.4	28.1	31.3	34.3	39.0	43.6	49.9	54.8	58.0
15:00	61.7	6.3	11.7	17.3	18.0	20.3	25.0	27.5	31.4	35.0	39.4	44.3	50.1	55.5	59.9
16:00	60.3	6.5	11.9	18.1	16.9	20.7	25.3	27.7	31.6	34.4	39.4	44.2	50.0	53.9	58.3
17:00	64.1	6.7	11.5	16.8	16.9	20.8	25.1	28.6	32.1	36.6	41.8	46.3	53.0	58.9	61.8
18:00	62.3	7.6	12.0	20.2	19.0	21.3	27.1	28.5	32.4	35.7	40.1	45.7	51.8	58.0	59.4
19:00	61.1	5.9	11.1	17.2	18.3	21.8	26.0	28.6	32.2	36.1	39.7	44.6	51.4	56.7	58.1
20:00	60.6	5.4	11.0	17.4	17.5	20.7	26.0	27.9	31.1	34.5	39.3	43.5	50.0	55.4	58.3
21:00	57.7	6.2	11.9	17.7	18.3	21.3	25.7	27.4	31.5	35.3	38.6	43.6	49.4	53.2	54.0
22:00	57.1	7.0	11.9	15.9	18.1	20.0	25.2	26.6	30.3	33.0	37.5	43.0	47.9	53.0	53.5
23:00	58.8	6.9	10.8	15.4	17.1	20.3	25.5	27.0	30.9	33.2	37.8	43.4	50.0	53.9	55.8

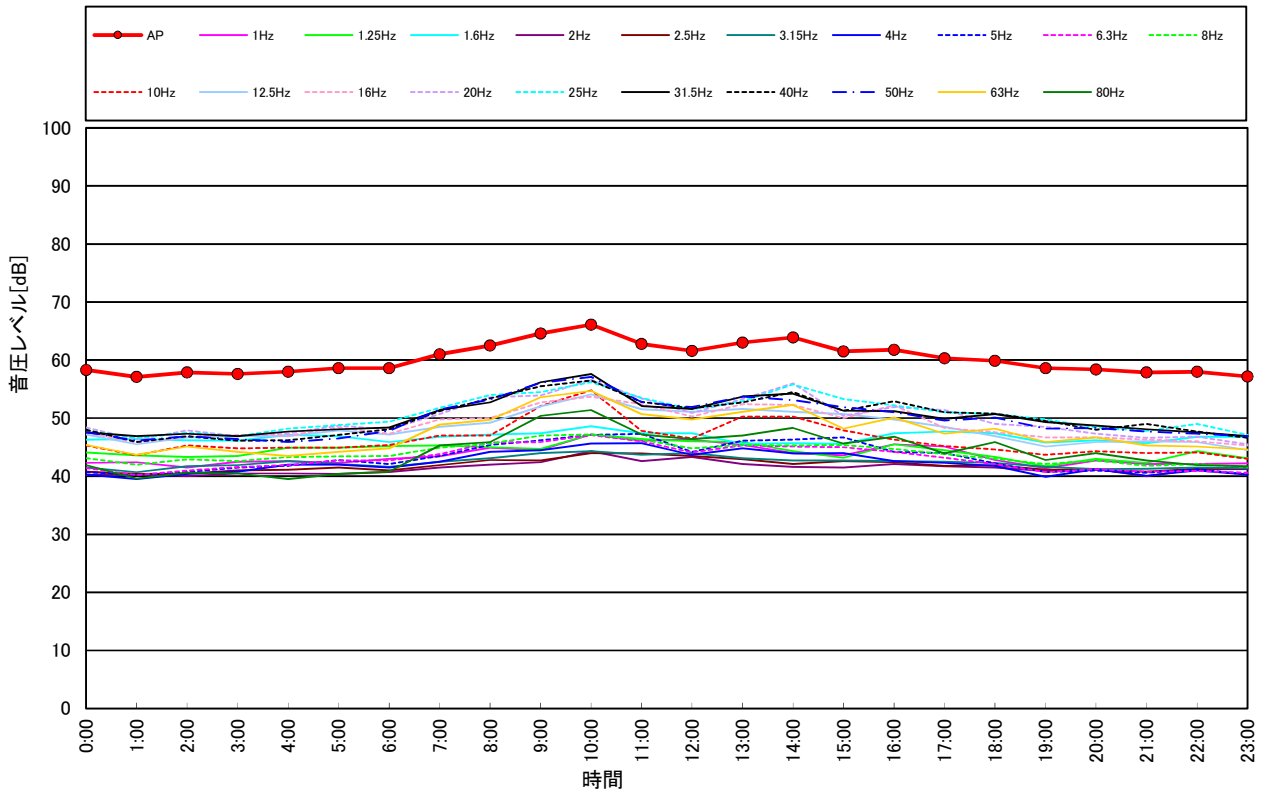


# 低周波音測定結果(L<sub>50</sub>値)(平日)

調査期間: 令和元年11月27日(水)  
 調査地点: 地点②

単位: dB

時刻	L <sub>50</sub>	1/3オクターブバンド中心周波数 [Hz]																			
		1	1.25	1.6	2	2.5	3.15	4	5	6.3	8	10	12.5	16	20	25	31.5	40	50	63	80
0:00	58.3	42.3	44.1	46.3	40.2	40.8	41.5	40.3	40.7	41.4	43.1	45.3	47.2	47.5	48.4	47.9	47.6	48.0	47.6	45.4	41.9
1:00	57.1	42.4	43.6	46.4	40.5	40.4	40.7	39.5	40.2	40.2	42.0	43.6	45.5	45.8	46.3	46.6	46.9	45.9	46.1	43.7	39.6
2:00	57.9	41.5	43.3	46.2	40.0	40.5	41.7	40.4	40.7	41.0	42.9	45.3	46.7	46.8	47.9	47.5	47.3	46.9	46.9	45.1	40.6
3:00	57.6	42.5	43.5	46.1	40.5	41.0	41.9	40.8	41.5	41.6	42.6	44.8	46.9	47.1	46.9	46.9	46.9	46.1	46.4	44.2	40.5
4:00	58.0	42.6	44.9	47.1	40.5	41.1	42.6	42.0	41.8	41.9	43.3	44.9	46.9	47.0	47.4	48.2	47.7	46.2	45.9	43.5	39.5
5:00	58.6	42.3	44.9	46.9	40.4	41.5	42.1	42.0	42.8	42.7	43.4	44.9	47.9	48.4	48.7	48.8	48.1	47.1	46.5	44.2	40.4
6:00	58.6	43.0	45.2	45.9	40.7	41.0	41.6	41.5	42.1	42.7	43.5	45.4	47.2	47.3	48.1	49.4	48.4	48.1	47.8	44.8	40.8
7:00	61.0	43.4	45.3	46.8	41.5	41.9	42.5	42.5	43.5	43.8	44.9	47.0	48.5	49.8	50.7	51.8	51.4	51.2	51.5	48.9	45.3
8:00	62.5	44.9	45.0	47.2	42.0	42.8	43.1	44.2	45.4	45.8	45.6	47.0	49.2	50.0	53.6	54.0	52.7	53.4	53.2	49.7	45.9
9:00	64.6	44.5	44.7	47.4	42.4	42.7	44.0	44.5	46.2	45.9	47.0	52.1	52.0	52.7	53.9	54.5	56.2	55.5	56.1	53.6	50.4
10:00	66.1	47.2	47.2	48.6	44.3	44.0	44.3	45.6	47.1	47.1	47.2	54.8	54.1	53.7	56.6	56.2	57.6	56.5	57.1	54.7	51.4
11:00	62.8	46.1	46.4	47.4	42.6	43.9	43.7	45.7	47.3	46.0	46.3	47.8	51.5	52.4	53.4	53.5	52.1	52.8	52.8	50.7	47.2
12:00	61.6	46.3	46.0	47.4	43.3	43.5	44.0	43.7	44.2	44.1	44.8	46.5	51.1	50.3	50.9	51.5	51.6	51.7	51.9	49.8	46.4
13:00	63.0	45.4	45.9	45.6	42.1	42.9	43.1	44.8	46.1	45.3	45.4	50.3	51.6	52.4	53.3	52.9	53.7	52.7	53.7	51.1	47.0
14:00	63.9	44.0	44.3	45.7	41.6	42.1	42.7	43.9	46.3	45.1	45.3	50.3	51.1	52.3	56.0	55.8	54.2	54.5	53.1	52.3	48.3
15:00	61.5	43.6	43.2	45.6	41.5	42.6	42.7	44.0	46.7	45.0	45.4	47.9	50.7	50.0	50.4	53.3	51.3	51.3	51.9	48.2	45.6
16:00	61.8	45.5	45.5	47.4	42.1	42.4	42.6	42.6	44.2	44.2	44.7	46.3	49.8	52.2	51.9	52.2	51.2	52.9	51.0	50.1	46.8
17:00	60.3	45.1	44.5	47.7	41.7	41.8	42.5	42.3	44.0	43.2	43.8	45.2	48.5	48.3	51.4	51.0	49.9	51.0	49.6	47.3	43.9
18:00	59.9	42.8	43.3	47.4	41.5	41.9	42.3	41.8	42.2	42.1	43.0	44.6	46.9	47.6	49.0	50.7	50.7	50.8	50.1	48.2	45.9
19:00	58.6	41.4	41.7	45.8	40.9	41.1	41.6	39.9	40.7	40.7	42.1	43.7	45.1	46.7	48.5	49.8	49.3	49.5	48.2	45.9	42.8
20:00	58.4	42.7	43.0	46.2	41.2	41.1	41.2	41.2	41.0	41.2	42.7	44.3	45.9	46.7	47.3	48.4	48.7	48.0	48.3	46.7	44.0
21:00	57.9	42.1	42.3	45.7	40.0	40.8	41.3	40.1	40.6	40.8	41.8	44.0	46.0	46.3	46.6	47.8	48.1	49.0	47.7	45.3	42.7
22:00	58.0	42.1	44.3	46.8	41.2	41.3	41.5	41.0	41.2	40.9	42.1	44.1	45.9	46.0	46.8	49.0	47.6	47.7	47.3	45.1	41.9
23:00	57.2	42.2	43.1	46.8	41.2	41.4	41.4	40.3	40.3	40.6	41.6	43.0	44.5	45.3	45.5	47.1	46.9	46.6	46.9	44.6	41.7



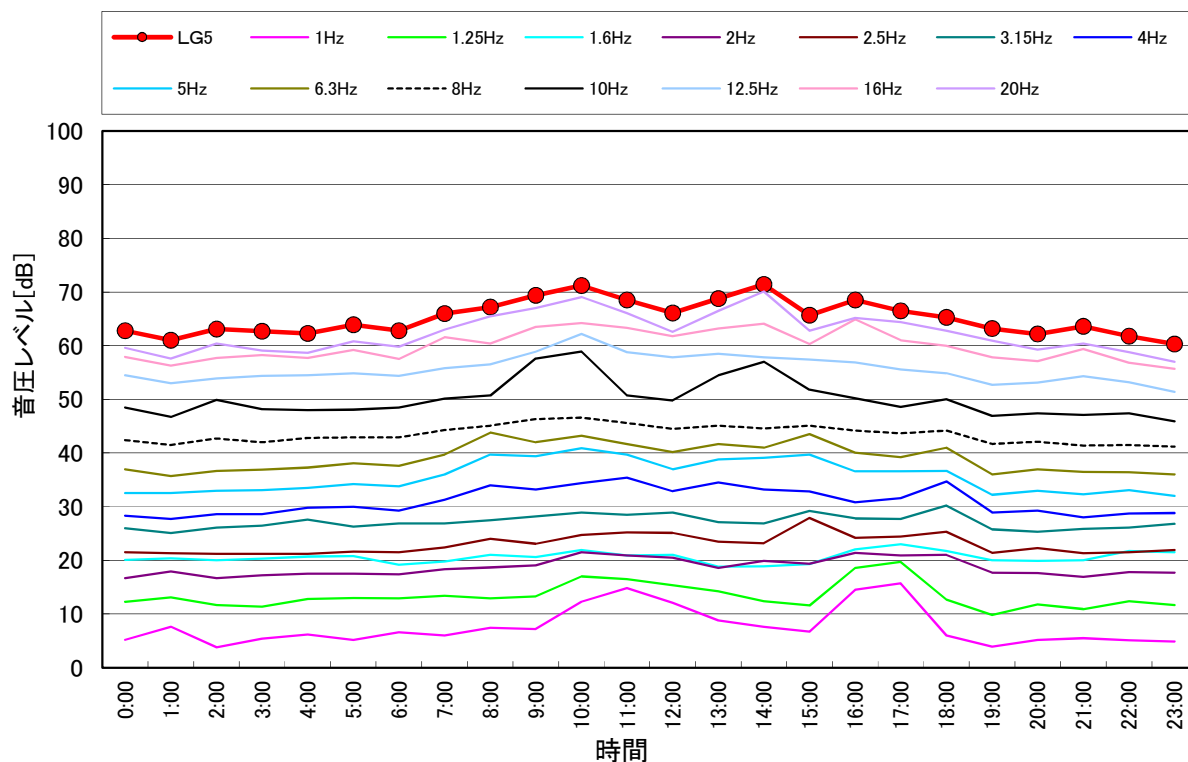
# 低周波音測定結果 ( $L_{G5}$ 値) (平日)

調査期間: 令和元年11月27日 (水)

調査地点: 地点②

単位: dB

時刻	$L_{G5}$	1/3オクターブバンド中心周波数[Hz]													
		1	1.25	1.6	2	2.5	3.15	4	5	6.3	8	10	12.5	16	20
0:00	62.8	5.2	12.3	20.1	16.7	21.5	26.0	28.3	32.5	37.0	42.4	48.5	54.5	57.9	59.6
1:00	61.0	7.6	13.1	20.4	17.9	21.3	25.1	27.7	32.5	35.7	41.5	46.7	53.0	56.3	57.6
2:00	63.1	3.8	11.7	20.0	16.7	21.2	26.1	28.6	33.0	36.7	42.7	49.9	53.9	57.7	60.4
3:00	62.7	5.4	11.4	20.3	17.2	21.2	26.5	28.6	33.1	36.9	42.0	48.2	54.4	58.3	59.1
4:00	62.3	6.2	12.8	20.7	17.5	21.2	27.6	29.8	33.5	37.3	42.8	48.0	54.5	57.7	58.7
5:00	63.9	5.2	13.0	20.8	17.5	21.6	26.3	30.0	34.2	38.1	42.9	48.1	54.9	59.2	60.8
6:00	62.8	6.6	12.9	19.2	17.4	21.5	26.9	29.3	33.8	37.6	42.9	48.5	54.4	57.5	59.8
7:00	66.0	6.0	13.4	19.8	18.3	22.4	26.9	31.3	36.0	39.7	44.3	50.1	55.8	61.6	63.0
8:00	67.2	7.4	12.9	21.0	18.7	24.0	27.5	34.0	39.7	43.8	45.1	50.7	56.5	60.4	65.5
9:00	69.4	7.2	13.3	20.6	19.1	23.1	28.2	33.2	39.4	42.0	46.3	57.6	58.9	63.5	67.0
10:00	71.2	12.3	17.0	21.9	21.5	24.7	28.9	34.4	40.9	43.2	46.6	58.9	62.2	64.2	69.1
11:00	68.5	14.8	16.5	20.9	20.9	25.2	28.5	35.4	39.7	41.7	45.6	50.7	58.8	63.3	66.1
12:00	66.1	12.1	15.4	21.0	20.5	25.1	28.9	32.9	37.0	40.2	44.5	49.8	57.8	61.8	62.6
13:00	68.8	8.8	14.2	18.8	18.6	23.5	27.1	34.5	38.8	41.7	45.1	54.5	58.5	63.2	66.5
14:00	71.4	7.6	12.4	18.9	19.9	23.2	26.9	33.2	39.1	41.0	44.6	57.0	57.8	64.1	70.1
15:00	65.7	6.7	11.6	19.3	19.4	27.9	29.2	32.8	39.7	43.5	45.1	51.8	57.4	60.3	62.8
16:00	68.5	14.5	18.6	22.0	21.4	24.2	27.8	30.8	36.6	40.1	44.2	50.2	56.9	64.9	65.2
17:00	66.5	15.7	19.7	23.0	20.9	24.4	27.7	31.6	36.6	39.2	43.7	48.6	55.6	61.0	64.4
18:00	65.3	6.0	12.7	21.7	21.0	25.3	30.2	34.7	36.7	41.0	44.2	50.0	54.9	60.0	62.8
19:00	63.2	3.9	9.8	20.0	17.7	21.4	25.8	28.9	32.2	36.0	41.7	46.9	52.7	57.8	60.9
20:00	62.2	5.2	11.8	19.9	17.6	22.3	25.3	29.3	33.0	37.0	42.1	47.4	53.1	57.1	59.3
21:00	63.6	5.5	10.9	20.0	16.9	21.3	25.9	28.0	32.3	36.5	41.4	47.1	54.3	59.4	60.4
22:00	61.8	5.1	12.4	21.7	17.8	21.5	26.1	28.7	33.1	36.4	41.5	47.4	53.2	56.8	58.8
23:00	60.3	4.9	11.7	21.5	17.7	21.9	26.8	28.8	32.0	36.0	41.2	45.9	51.4	55.7	57.0

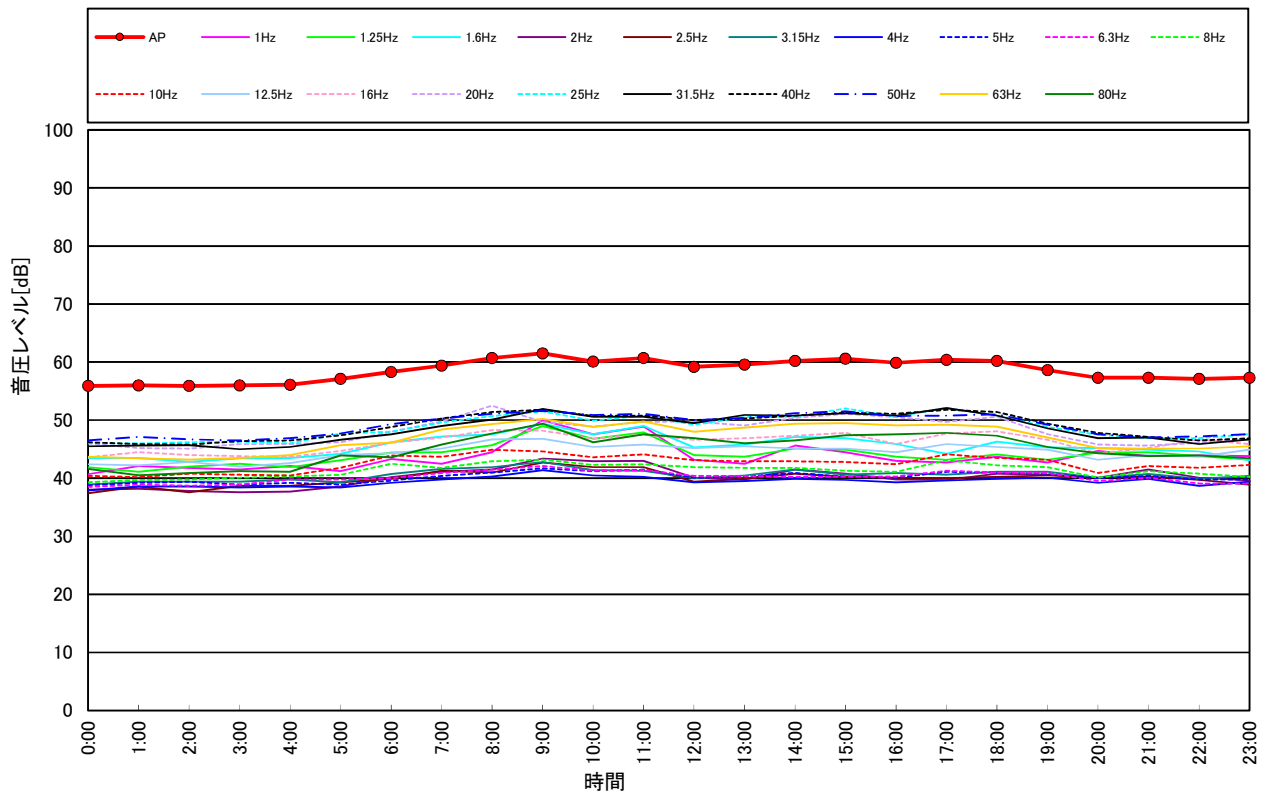


# 低周波音測定結果(L<sub>50</sub>値)(休日)

調査期間: 令和元年12月1日(日)  
 調査地点: 地点②

単位: dB

時刻	L <sub>50</sub>	1/3オクターブバンド中心周波数 [Hz]																			
		1	1.25	1.6	2	2.5	3.15	4	5	6.3	8	10	12.5	16	20	25	31.5	40	50	63	80
0:00	55.9	40.7	41.9	43.5	38.0	37.4	38.9	37.9	38.8	38.5	39.3	40.4	42.4	43.6	46.0	46.0	45.5	46.2	46.5	43.7	41.6
1:00	56.0	42.1	41.1	43.5	38.2	38.6	39.4	38.6	39.2	38.9	39.7	40.2	42.2	44.5	45.2	46.0	45.6	45.9	47.1	43.4	40.5
2:00	55.9	41.8	42.0	42.8	37.8	37.6	39.4	38.6	39.4	38.7	39.8	40.8	42.8	44.0	45.1	46.2	45.7	45.8	46.7	43.2	40.9
3:00	56.0	41.5	42.5	43.4	37.6	38.7	39.4	38.4	38.9	38.9	40.1	40.6	42.0	43.8	45.9	46.3	45.0	46.4	46.5	43.5	41.2
4:00	56.1	42.1	41.9	43.5	37.7	38.7	39.8	38.6	39.2	39.8	40.3	40.5	42.6	43.7	45.9	46.0	45.4	46.5	46.9	44.0	41.1
5:00	57.1	41.2	43.1	44.2	38.6	39.3	39.3	38.4	38.9	39.8	40.6	41.8	44.0	44.7	46.2	47.7	46.6	47.4	47.7	45.7	43.9
6:00	58.3	43.3	44.4	46.2	40.2	39.9	40.7	39.2	39.6	40.0	42.5	43.9	44.3	46.1	48.0	48.0	47.6	48.8	49.3	46.1	43.6
7:00	59.4	42.5	44.5	47.2	41.1	41.3	41.6	39.8	40.4	40.9	41.8	43.7	45.1	47.0	49.8	49.6	49.0	50.3	50.3	48.4	45.8
8:00	60.7	44.5	45.7	47.6	41.5	41.0	41.9	40.3	41.0	41.5	42.9	44.9	46.7	48.3	52.5	50.7	50.1	51.4	51.1	49.3	47.7
9:00	61.5	50.0	49.0	49.4	43.4	42.7	42.8	41.4	41.7	42.1	43.2	44.6	46.8	48.2	49.7	51.5	51.9	51.8	51.6	50.2	49.4
10:00	60.1	47.6	46.8	47.6	42.9	41.9	41.4	40.5	41.2	41.3	42.3	43.6	45.4	46.8	48.9	49.9	50.6	50.7	50.9	48.8	46.2
11:00	60.7	48.9	47.9	49.0	43.0	41.9	41.3	40.2	41.5	41.4	42.4	44.1	45.8	47.5	49.7	50.8	50.6	50.8	51.1	49.8	47.6
12:00	59.2	43.2	44.0	45.3	40.1	39.4	40.0	39.3	40.1	40.4	41.9	43.1	45.2	46.6	49.8	49.2	49.5	50.0	50.0	48.0	46.9
13:00	59.6	42.5	43.7	45.8	39.8	39.9	40.5	39.5	40.3	40.4	41.8	42.9	45.5	46.9	49.1	50.5	50.9	50.3	50.4	48.7	46.0
14:00	60.2	45.6	45.1	47.1	41.5	40.8	41.5	39.9	40.9	40.2	41.8	42.9	45.1	47.3	50.4	50.6	50.8	50.8	51.2	49.4	46.5
15:00	60.6	44.5	44.9	46.9	40.8	40.2	40.6	39.7	40.3	40.3	41.3	42.8	45.1	47.8	51.1	52.0	51.2	51.3	51.5	49.5	47.4
16:00	59.9	43.0	43.7	45.9	39.8	40.1	40.9	39.3	40.1	40.3	41.1	42.4	44.5	45.9	50.5	50.6	50.8	51.1	50.7	49.1	47.6
17:00	60.4	42.7	43.2	44.2	39.7	40.0	40.6	39.6	41.1	41.3	43.1	44.1	45.9	47.7	49.7	52.1	52.1	51.8	50.8	49.2	47.8
18:00	60.2	43.7	44.1	46.3	40.8	40.2	41.1	39.9	41.0	41.0	42.2	43.5	45.4	48.1	50.6	50.8	50.8	51.4	51.0	48.9	47.3
19:00	58.6	42.7	43.2	45.3	40.6	40.5	41.1	40.1	40.8	40.9	41.9	43.2	44.9	46.6	47.6	48.8	48.6	49.4	49.2	47.0	45.4
20:00	57.3	44.7	44.4	45.2	40.1	40.1	40.1	39.2	40.0	39.5	40.1	40.9	43.2	44.3	45.8	47.5	46.9	47.8	47.6	45.2	44.3
21:00	57.3	43.8	44.5	44.9	41.5	40.3	40.7	39.9	40.4	40.1	41.2	42.1	44.0	45.2	45.6	46.9	47.0	47.1	47.0	45.1	43.8
22:00	57.1	43.9	43.8	44.6	40.1	39.7	39.9	38.7	39.8	39.1	40.8	41.8	43.7	46.7	46.1	46.9	45.9	46.5	47.2	45.1	43.9
23:00	57.3	43.8	43.2	43.1	39.6	38.9	40.4	39.4	39.8	39.1	40.2	42.3	44.9	45.9	46.7	47.6	46.7	46.9	47.6	45.5	43.4





# 低周波音測定結果(L<sub>G5</sub>値)(休日)

調査期間: 令和元年12月1日(日)

調査地点: 地点②

単位: dB

時刻	L <sub>G5</sub>	1/3オクターブバンド中心周波数[Hz]													
		1	1.25	1.6	2	2.5	3.15	4	5	6.3	8	10	12.5	16	20
0:00	62.7	3.8	9.8	17.9	14.1	18.6	23.2	27.1	30.6	34.6	39.2	44.5	51.2	56.7	60.8
1:00	61.6	4.0	10.5	18.8	15.4	19.5	24.3	26.8	31.2	34.8	39.8	44.0	49.8	55.3	59.9
2:00	61.6	4.3	10.8	18.3	14.5	18.6	23.9	27.0	31.2	34.4	40.0	44.6	52.7	58.0	57.6
3:00	59.6	4.3	11.0	18.1	14.6	19.7	24.6	26.7	30.7	35.2	39.8	44.1	49.6	54.3	57.0
4:00	59.6	4.4	10.3	18.2	14.7	19.6	24.4	26.7	31.1	35.7	39.7	44.1	49.3	53.9	57.3
5:00	60.8	4.2	11.7	19.7	15.3	20.1	24.4	27.0	31.3	35.8	40.0	45.3	52.2	55.6	58.0
6:00	61.8	5.4	12.9	19.9	16.9	20.4	25.4	27.4	31.7	35.6	41.9	46.9	51.3	56.4	59.4
7:00	65.4	5.9	12.4	21.5	17.6	21.8	26.7	27.8	32.2	36.1	41.0	46.8	52.6	57.4	64.3
8:00	65.5	6.7	14.4	22.6	18.2	21.8	26.7	28.6	32.8	37.0	42.2	48.1	53.7	59.0	63.9
9:00	64.3	17.1	20.6	24.3	23.7	25.6	29.0	30.7	34.9	38.9	43.1	48.8	54.7	59.2	61.7
10:00	62.8	19.2	22.0	25.0	25.3	26.5	28.8	30.2	34.3	37.3	41.7	46.9	52.3	57.2	60.5
11:00	64.1	19.8	23.0	26.4	27.6	29.3	29.6	30.9	35.7	38.4	42.1	48.1	53.3	58.4	62.0
12:00	63.3	6.3	12.4	19.0	16.8	19.6	24.5	27.5	32.2	35.7	41.1	45.9	52.3	57.0	61.5
13:00	63.8	4.8	11.8	20.2	16.7	20.7	25.3	27.7	32.1	36.3	41.1	45.9	52.2	58.7	61.5
14:00	63.7	12.7	16.8	21.4	20.1	23.2	25.8	28.0	32.9	36.3	41.7	45.8	52.2	57.9	61.8
15:00	65.2	11.5	13.9	20.5	20.1	21.4	25.0	27.9	32.0	36.0	40.6	45.7	53.0	58.7	63.6
16:00	63.0	5.8	11.0	19.8	16.9	20.6	25.1	27.1	32.0	35.8	40.6	45.1	51.6	56.1	61.4
17:00	65.7	5.3	11.4	18.6	16.8	20.3	25.6	28.2	33.2	37.2	42.9	48.0	54.1	60.5	63.5
18:00	66.4	6.3	12.4	21.0	17.8	20.9	25.8	28.3	33.0	36.9	41.9	47.1	53.9	62.5	63.5
19:00	63.5	5.9	11.4	19.0	17.9	21.7	26.4	29.0	33.5	37.4	41.9	46.9	53.4	59.5	60.3
20:00	59.9	7.7	12.5	19.5	17.1	20.6	25.1	27.3	31.9	35.5	40.4	44.0	50.2	55.0	57.2
21:00	60.4	6.9	12.4	19.2	18.3	20.8	25.3	28.4	32.6	37.0	41.2	45.5	51.0	55.8	57.2
22:00	60.8	6.3	11.7	17.6	17.1	20.1	24.5	26.9	31.6	34.4	41.9	44.8	50.7	56.8	57.5
23:00	61.5	6.5	11.2	16.8	16.7	19.4	25.1	27.2	31.9	34.6	39.2	45.5	52.8	56.6	58.5

