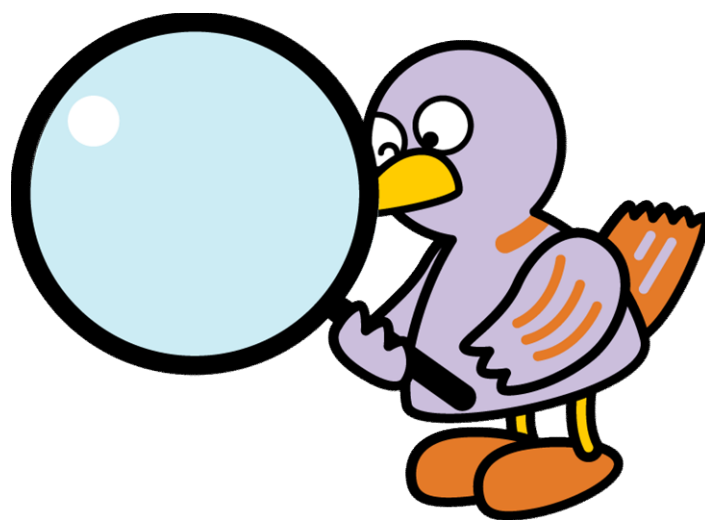


埼玉県鉱工業指数

令和5年2月分



埼玉県マスコット「コバトン」



彩の国
埼玉県

総務部統計課

令和5年2月 埼玉県鉱工業指数 概要

○ 総合指数の動向

令和5年2月の鉱工業指数は、生産が77.7で3か月ぶりの上昇となった。出荷は80.0で4か月ぶりの上昇となった。また、在庫は89.0で2か月連続の上昇、在庫率は107.1で3か月ぶりの低下となった。

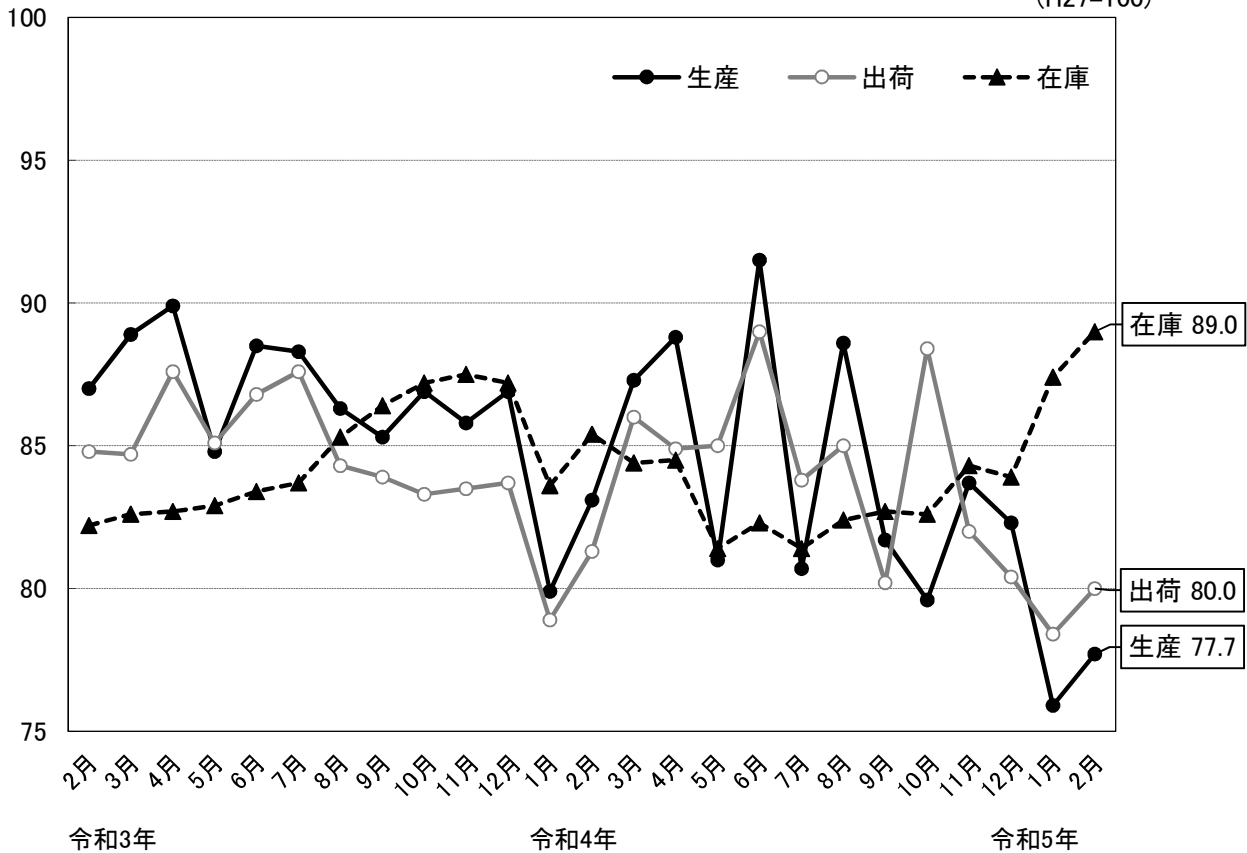
(平成27年=100)

| | 埼玉県 | | | 全国 | | |
|-----|-------|--------|--------|-------|--------|--------|
| | 指数 | 前月比 | 前年同月比 | 指数 | 前月比 | 前年同月比 |
| 生産 | 77.7 | 2.4% | ▲ 5.4% | 94.9 | 4.6% | ▲ 0.5% |
| 出荷 | 80.0 | 2.0% | ▲ 0.3% | 92.7 | 3.9% | 0.9% |
| 在庫 | 89.0 | 1.8% | 4.2% | 103.5 | 1.3% | 2.2% |
| 在庫率 | 107.1 | ▲ 5.6% | 5.5% | 126.1 | ▲ 1.8% | 5.2% |

※ 指数と前月比は季節調整済み(X-12-ARIMA)、前年同月比は原指数、全国は確報値による。

○ 総合指数の推移

(H27=100)



○ 上昇・低下に影響した主な業種と品目

業種は、生産、出荷、在庫の各指数の前月比に与える影響の大きいものから順に上位4業種について記載しています。

(1) 生産

| | | 業種 | 前月比 ※ | 主な品目 |
|----|------|--------------|---------|-------------------------------------|
| 上昇 | 11業種 | 食料品工業 | 5.9% | 炭酸飲料、チョコレート、めん類 |
| | | 輸送機械工業 | 4.0% | 乗用車、輸送機械用エアコン、自動車エンジン |
| | | 情報通信機械工業 | 10.1% | カーナビゲーション、カーオーディオ、その他の陸上移動通信装置 |
| | | 化学工業 | 1.6% | 化粧品、合成樹脂塗料、印刷インキ |
| 低下 | 11業種 | 生産用機械工業 | ▲ 37.0% | フラットパネル・ディスプレイ製造装置、包装・荷造機械、マシニングセンタ |
| | | パルプ・紙・紙加工品工業 | ▲ 15.4% | 段ボール原紙、特殊印刷用紙、段ボールシート |
| | | 繊維工業 | ▲ 17.9% | 不織布、織物製繊維製品(外衣)、綿織物染色整理 |
| | | 業務用機械工業 | ▲ 3.7% | 試験機、医療用機械器具、精密測定機 |

横ばい1業種

(2) 出荷

| | | 業種 | 前月比 ※ | 主な品目 |
|----|------|--------------|---------|-------------------------------------|
| 上昇 | 11業種 | 食料品工業 | 6.3% | 炭酸飲料、チョコレート、めん類 |
| | | 輸送機械工業 | 6.5% | 乗用車、普通トラック、自動車エンジン |
| | | 化学工業 | 3.4% | 化粧品、医薬品、ウレタンフォーム |
| | | 電子部品・デバイス工業 | 8.6% | 混成集積回路、プリント配線実装基板、サーミスタ |
| 低下 | 12業種 | 生産用機械工業 | ▲ 20.3% | フラットパネル・ディスプレイ製造装置、包装・荷造機械、コンクリート機械 |
| | | パルプ・紙・紙加工品工業 | ▲ 5.4% | 段ボール原紙、衛生用紙、特殊印刷用紙 |
| | | その他工業 | ▲ 8.4% | ユニット住宅、シャープペンシル、電動玩具 |
| | | 電気機械工業 | ▲ 2.6% | 開閉制御装置、電気計器、電気掃除機 |

(3) 在庫

| | | 業種 | 前月比 ※ | 主な品目 |
|----|------|--------------|---------|-------------------------------------|
| 上昇 | 6業種 | 電気機械工業 | 13.0% | クッキングヒーター、電気掃除機、電気測定器(半導体・IC測定器を除く) |
| | | 化学工業 | 5.2% | ウレタンフォーム、印刷インキ、合成樹脂塗料 |
| | | 情報通信機械工業 | 13.4% | ガス警報器、その他の陸上移動通信装置 |
| | | その他工業 | 11.9% | ユニット住宅、シャープペンシル |
| 低下 | 13業種 | パルプ・紙・紙加工品工業 | ▲ 10.5% | 段ボール原紙、特殊印刷用紙 |
| | | 電子部品・デバイス工業 | ▲ 7.8% | 混成集積回路、光電変換素子、整流素子 |
| | | 非鉄金属工業 | ▲ 4.6% | 伸銅製品、電力用電線・ケーブル、銅電線 |
| | | 窯業・土石製品工業 | ▲ 3.0% | セメント、ポルトランドセメントクリンカ、生石灰 |

横ばい1業種

※1 季節調整済指数の前月比。

※2 主な品目について一部秘匿あり。

< 資 料 >

○ 埼玉県・全国鉱工業生産指数の推移

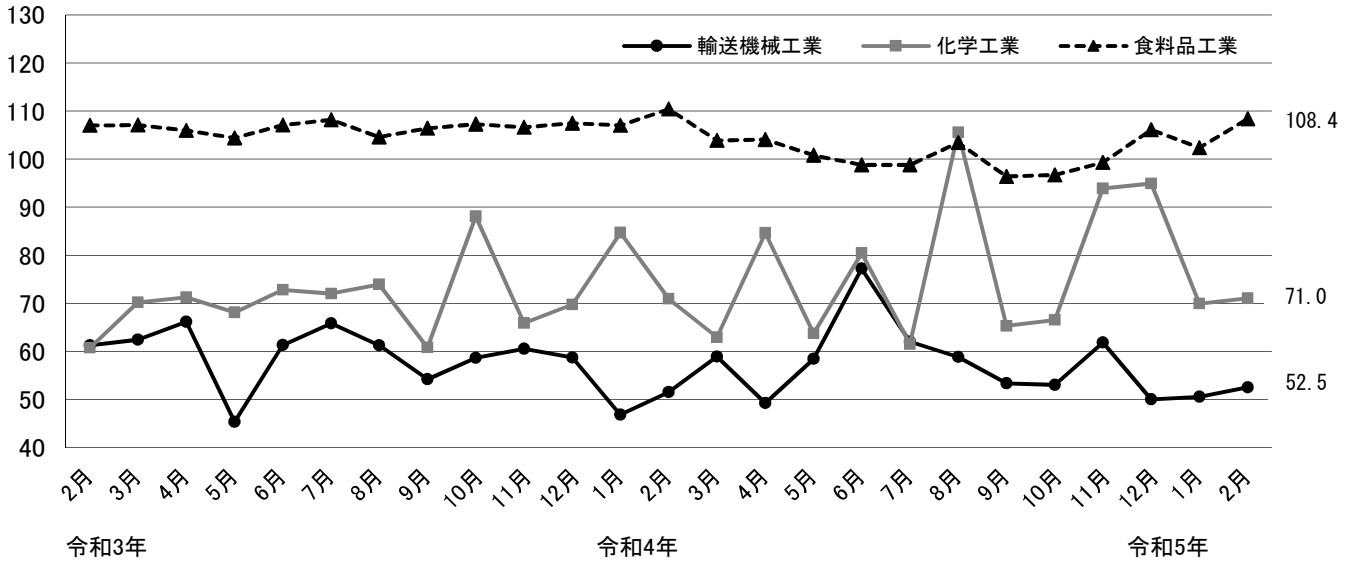
(平成27年=100)

| | 埼 玉 県 | | | | 全 国 | | | |
|--------|---------|---------|------|---------|---------|--------|-------|---------|
| | 季節調整済指数 | | 原指数 | | 季節調整済指数 | | 原指数 | |
| | | 前月比 | | 前年同月比 | | 前月比 | | 前年同月比 |
| 令和2年平均 | — | — | 84.3 | ▲ 12.6% | — | — | 90.6 | ▲ 10.4% |
| 令和3年平均 | — | — | 87.4 | 3.7% | — | — | 95.7 | 5.6% |
| 令和4年平均 | — | — | 83.9 | ▲ 4.0% | — | — | 95.6 | ▲ 0.1% |
| 令和4年1月 | 79.9 | ▲ 8.1% | 76.3 | — | 94.3 | ▲ 2.4% | 87.7 | — |
| 2月 | 83.1 | 4.0% | 79.7 | ▲ 4.6% | 96.2 | 2.0% | 92.5 | 0.5% |
| 3月 | 87.3 | 5.1% | 93.0 | ▲ 3.0% | 96.5 | 0.3% | 107.1 | ▲ 1.7% |
| 4月 | 88.8 | 1.7% | 89.0 | ▲ 2.7% | 95.1 | ▲ 1.5% | 93.8 | ▲ 4.9% |
| 5月 | 81.0 | ▲ 8.8% | 75.4 | ▲ 3.0% | 88.0 | ▲ 7.5% | 83.8 | ▲ 3.1% |
| 6月 | 91.5 | 13.0% | 95.1 | 3.4% | 96.1 | 9.2% | 98.8 | ▲ 2.8% |
| 7月 | 80.7 | ▲ 11.8% | 83.1 | ▲ 9.0% | 96.9 | 0.8% | 98.0 | ▲ 2.0% |
| 8月 | 88.6 | 9.8% | 80.4 | 4.3% | 100.2 | 3.4% | 91.5 | 5.8% |
| 9月 | 81.7 | ▲ 7.8% | 81.5 | ▲ 4.2% | 98.5 | ▲ 1.7% | 101.9 | 9.6% |
| 10月 | 79.6 | ▲ 2.6% | 81.9 | ▲ 9.4% | 95.3 | ▲ 3.2% | 95.6 | 3.0% |
| 11月 | 83.7 | 5.2% | 87.9 | ▲ 2.4% | 95.5 | 0.2% | 99.0 | ▲ 0.9% |
| 12月 | 82.3 | ▲ 1.7% | 83.4 | ▲ 6.8% | 95.8 | 0.3% | 97.6 | ▲ 2.4% |
| 令和5年1月 | 75.9 | ▲ 7.8% | 72.7 | ▲ 4.7% | 90.7 | ▲ 5.3% | 85.0 | ▲ 3.1% |
| 2月 | 77.7 | 2.4% | 75.4 | ▲ 5.4% | 94.9 | 4.6% | 92.0 | ▲ 0.5% |

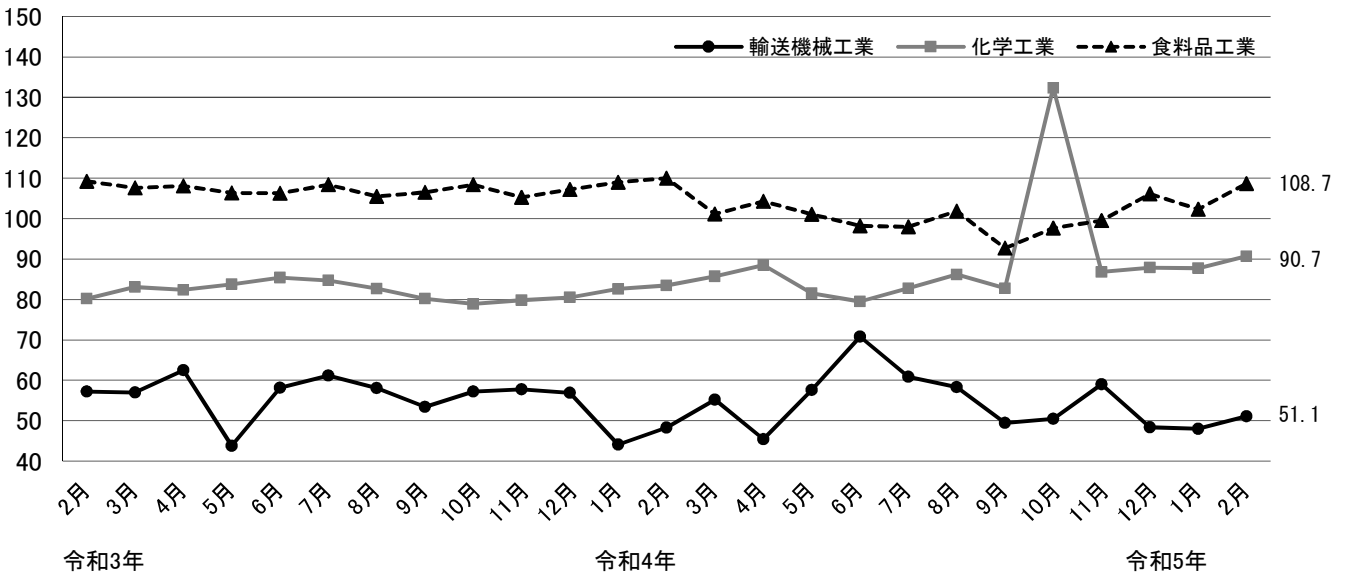
※全国は確報値によります。

○ 県内主要業種の指数推移

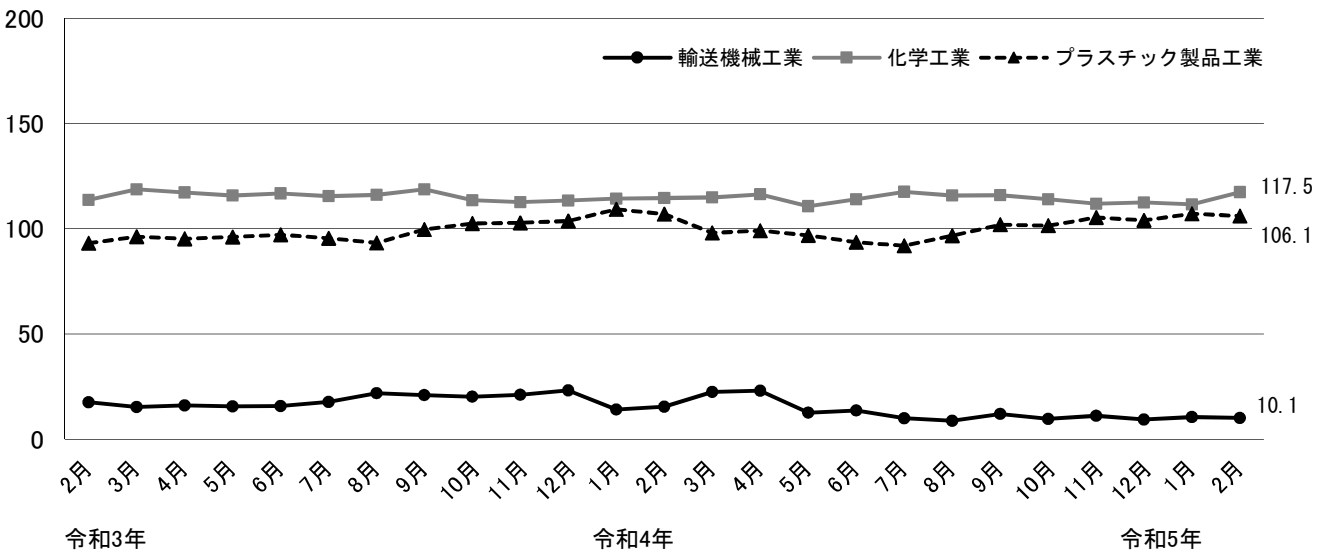
生産



出荷



在庫



第1-1表 埼玉県鉱工業 生産指数（業種分類）

| 項目 | 業種分類 | | | | | | | | | | | | |
|----------------------------|------------|---------|-------|--------|--------|--------|---------|---------|-------------|--------|----------|---------|-------|
| | 鉱工業総合 | 製造工業総合 | 鉄鋼業 | 非鉄金属工業 | 金属製品工業 | 汎用機械工業 | 生産用機械工業 | 業務用機械工業 | 電子部品・デバイス工業 | 電気機械工業 | 情報通信機械工業 | 輸送機械工業 | |
| ウェイト | 10,000.0 | 9,992.6 | 198.8 | 288.0 | 380.4 | 493.9 | 533.1 | 429.8 | 280.5 | 472.7 | 454.7 | 1,055.9 | |
| 品目数 | 201 | 199 | 12 | 8 | 10 | 13 | 11 | 5 | 13 | 24 | 7 | 9 | |
| 原 指 数 | 平成30年平均 | 101.3 | 101.3 | 97.7 | 106.0 | 99.6 | 114.1 | 144.8 | 80.0 | 124.5 | 102.5 | 90.2 | 104.0 |
| | 令和1年平均 | 96.4 | 96.4 | 89.8 | 96.4 | 99.1 | 97.8 | 131.0 | 76.3 | 114.9 | 87.1 | 103.6 | 93.9 |
| | 令和2年平均 | 84.3 | 84.3 | 84.7 | 77.7 | 90.8 | 92.6 | 86.2 | 62.6 | 98.3 | 84.1 | 102.3 | 61.3 |
| | 令和3年平均 | 87.4 | 87.3 | 95.8 | 81.8 | 97.4 | 122.0 | 88.9 | 69.8 | 98.5 | 95.0 | 104.7 | 59.8 |
| | 令和4年平均 | 83.9 | 83.9 | 92.6 | 76.4 | 74.1 | 130.8 | 72.6 | 70.1 | 84.0 | 99.4 | 81.3 | 56.8 |
| | 令和4年1月 | 76.3 | 76.3 | 85.9 | 70.9 | 70.8 | 109.7 | 41.2 | 68.7 | 94.9 | 89.7 | 77.1 | 41.9 |
| | 2月 | 79.7 | 79.7 | 88.5 | 73.4 | 74.0 | 116.4 | 43.1 | 76.9 | 82.0 | 90.3 | 106.6 | 52.8 |
| | 3月 | 93.0 | 93.0 | 99.9 | 83.9 | 82.8 | 137.5 | 115.0 | 100.1 | 97.8 | 111.5 | 120.3 | 66.6 |
| | 4月 | 89.0 | 88.9 | 95.0 | 78.2 | 75.3 | 136.7 | 99.0 | 65.2 | 87.8 | 94.9 | 116.0 | 46.2 |
| | 5月 | 75.4 | 75.3 | 79.9 | 74.5 | 64.9 | 120.8 | 53.4 | 71.2 | 89.3 | 84.1 | 63.9 | 51.5 |
| | 6月 | 95.1 | 95.1 | 96.8 | 81.5 | 75.9 | 144.7 | 129.4 | 78.1 | 100.6 | 106.9 | 91.3 | 81.1 |
| | 7月 | 83.1 | 83.1 | 94.2 | 79.0 | 75.4 | 133.9 | 72.5 | 63.3 | 90.1 | 100.7 | 93.5 | 60.2 |
| | 8月 | 80.4 | 80.4 | 78.0 | 68.0 | 68.1 | 118.8 | 63.7 | 58.9 | 76.1 | 96.0 | 61.1 | 52.2 |
| | 9月 | 81.5 | 81.5 | 95.0 | 80.3 | 76.6 | 137.3 | 72.8 | 65.9 | 71.7 | 108.7 | 69.9 | 55.5 |
| | 10月 | 81.9 | 81.9 | 105.9 | 77.3 | 75.4 | 140.3 | 73.5 | 63.4 | 70.6 | 104.0 | 57.6 | 53.9 |
| | 11月 | 87.9 | 87.9 | 101.3 | 80.2 | 78.6 | 134.2 | 58.8 | 63.9 | 70.4 | 103.8 | 69.4 | 68.5 |
| | 12月 | 83.4 | 83.4 | 90.3 | 69.5 | 71.1 | 139.6 | 49.3 | 65.3 | 77.2 | 102.5 | 49.0 | 50.6 |
| | 令和5年1月 | 72.7 | 72.7 | 87.3 | 59.9 | 68.1 | 112.6 | 65.4 | 76.1 | 56.1 | 97.8 | 43.7 | 46.3 |
| | 2月 | 75.4 | 75.4 | 91.9 | 66.0 | 69.6 | 120.7 | 40.1 | 74.4 | 54.6 | 100.3 | 52.4 | 54.6 |
| | 【前年同月比(%)】 | ▲ 5.4 | ▲ 5.4 | 3.8 | ▲ 10.1 | ▲ 5.9 | 3.7 | ▲ 7.0 | ▲ 3.3 | ▲ 33.4 | 11.1 | ▲ 50.8 | 3.4 |
| 季 節 調 整 指 数 | 令和4年1月 | 79.9 | 79.9 | 92.0 | 75.9 | 74.4 | 120.4 | 36.7 | 67.8 | 99.0 | 92.9 | 82.6 | 46.8 |
| | 2月 | 83.1 | 83.1 | 92.1 | 74.1 | 79.0 | 123.8 | 43.4 | 75.2 | 92.4 | 91.3 | 96.4 | 51.5 |
| | 3月 | 87.3 | 87.3 | 97.1 | 76.5 | 78.6 | 119.6 | 110.1 | 90.0 | 90.9 | 97.8 | 104.5 | 58.9 |
| | 4月 | 88.8 | 88.7 | 94.2 | 81.1 | 74.8 | 137.2 | 91.7 | 69.0 | 91.9 | 97.8 | 121.1 | 49.2 |
| | 5月 | 81.0 | 80.9 | 84.6 | 79.5 | 66.5 | 121.4 | 70.3 | 78.6 | 93.5 | 91.6 | 77.8 | 58.4 |
| | 6月 | 91.5 | 91.5 | 90.7 | 78.8 | 75.3 | 128.4 | 160.2 | 78.3 | 96.6 | 100.6 | 88.4 | 77.2 |
| | 7月 | 80.7 | 80.7 | 92.1 | 77.4 | 71.1 | 134.1 | 85.5 | 63.0 | 89.6 | 101.9 | 82.1 | 62.0 |
| | 8月 | 88.6 | 88.6 | 88.5 | 79.0 | 73.2 | 131.8 | 65.0 | 66.0 | 81.3 | 108.9 | 67.6 | 58.8 |
| | 9月 | 81.7 | 81.7 | 91.1 | 78.7 | 75.3 | 132.5 | 79.8 | 59.8 | 66.0 | 104.9 | 68.0 | 53.3 |
| | 10月 | 79.6 | 79.6 | 100.5 | 75.6 | 74.7 | 147.9 | 62.5 | 66.2 | 71.0 | 106.0 | 60.2 | 53.0 |
| | 11月 | 83.7 | 83.7 | 97.9 | 72.9 | 75.8 | 141.6 | 52.3 | 64.9 | 65.8 | 101.9 | 67.2 | 61.8 |
| | 12月 | 82.3 | 82.3 | 91.0 | 70.2 | 71.8 | 136.1 | 39.9 | 63.2 | 76.5 | 99.6 | 50.9 | 50.0 |
| | 令和5年1月 | 75.9 | 75.8 | 93.6 | 63.8 | 71.3 | 123.8 | 61.6 | 74.7 | 57.4 | 101.3 | 44.4 | 50.5 |
| | 2月 | 77.7 | 77.7 | 94.6 | 65.9 | 73.5 | 126.6 | 38.8 | 71.9 | 60.7 | 99.5 | 48.9 | 52.5 |
| 【前月比(%)】 | 2.4 | 2.5 | 1.1 | 3.3 | 3.1 | 2.3 | ▲ 37.0 | ▲ 3.7 | 5.7 | ▲ 1.8 | 10.1 | 4.0 | |

(平成27年=100)

| 窯業・土石製品工業 | 化学工業 | プラスチック製品工業 | パルプ・紙・紙加工品工業 | 繊維工業 | 食料品工業 | その他工業総合 | | | | | | | 鉱業 |
|-----------|---------|------------|--------------|--------|---------|---------|--------|--------|--------|-------|----------|-------|-------|
| | | | | | | | ゴム製品工業 | 皮革製品工業 | 家具工業 | 印刷業 | 木材・木製品工業 | その他工業 | |
| 244.5 | 1,489.4 | 577.9 | 376.2 | 105.7 | 1,442.0 | 1,169.1 | 116.3 | 17.7 | 73.9 | 770.6 | 32.3 | 158.3 | 7.4 |
| 14 | 7 | 12 | 7 | 6 | 23 | 18 | 3 | 2 | 3 | 3 | 2 | 5 | 2 |
| 101.5 | 85.5 | 103.9 | 110.0 | 93.0 | 103.8 | 93.7 | 86.8 | 80.0 | 113.9 | 89.1 | 148.7 | 102.5 | 107.9 |
| 98.1 | 83.6 | 98.8 | 108.9 | 87.3 | 105.6 | 86.8 | 81.8 | 68.8 | 111.2 | 81.5 | 132.5 | 97.6 | 106.5 |
| 95.8 | 73.3 | 89.8 | 104.9 | 71.9 | 106.1 | 74.1 | 68.6 | 48.7 | 99.4 | 68.3 | 119.1 | 88.5 | 105.1 |
| 94.1 | 71.6 | 93.1 | 109.1 | 69.0 | 106.7 | 74.0 | 75.7 | 38.3 | 88.8 | 66.3 | 123.9 | 97.1 | 101.3 |
| 93.4 | 77.2 | 94.9 | 108.4 | 62.0 | 101.9 | 69.8 | 76.4 | 40.4 | 69.3 | 61.3 | 96.6 | 104.6 | 99.7 |
| 81.6 | 71.6 | 85.7 | 100.9 | 61.3 | 100.2 | 67.1 | 73.3 | 36.4 | 59.0 | 58.4 | 128.8 | 100.1 | 74.7 |
| 95.6 | 67.4 | 89.8 | 97.6 | 63.6 | 99.9 | 70.9 | 71.6 | 35.2 | 82.3 | 61.0 | 141.1 | 103.2 | 104.0 |
| 97.4 | 67.2 | 97.9 | 119.7 | 68.4 | 107.8 | 75.4 | 88.1 | 46.1 | 73.6 | 66.2 | 94.9 | 111.5 | 113.1 |
| 90.9 | 88.7 | 103.1 | 113.7 | 57.9 | 108.6 | 68.3 | 78.7 | 45.6 | 64.6 | 62.7 | 114.2 | 83.1 | 100.2 |
| 92.0 | 59.0 | 95.2 | 99.5 | 51.8 | 97.1 | 64.5 | 64.6 | 35.9 | 68.0 | 57.3 | 106.5 | 92.5 | 102.6 |
| 97.2 | 94.9 | 102.5 | 114.5 | 58.8 | 97.7 | 72.2 | 80.2 | 36.3 | 67.4 | 60.7 | 114.6 | 120.1 | 108.0 |
| 84.4 | 65.6 | 99.6 | 113.0 | 55.3 | 100.0 | 68.9 | 76.6 | 45.6 | 71.1 | 59.3 | 71.1 | 110.6 | 59.2 |
| 91.2 | 94.8 | 91.8 | 100.3 | 56.6 | 96.3 | 64.4 | 66.0 | 41.9 | 66.7 | 56.7 | 70.0 | 101.2 | 104.9 |
| 92.7 | 66.2 | 95.2 | 106.2 | 66.5 | 94.5 | 73.9 | 80.9 | 49.4 | 65.7 | 65.6 | 87.8 | 113.2 | 108.1 |
| 95.8 | 66.5 | 95.1 | 114.5 | 67.1 | 102.9 | 70.7 | 78.2 | 39.9 | 69.9 | 64.1 | 71.1 | 101.0 | 105.0 |
| 100.9 | 94.0 | 96.4 | 111.2 | 73.1 | 106.1 | 72.0 | 82.8 | 39.0 | 71.1 | 62.9 | 73.7 | 112.5 | 101.4 |
| 101.3 | 89.9 | 86.6 | 110.0 | 63.7 | 112.1 | 69.0 | 76.3 | 33.1 | 71.7 | 60.1 | 85.6 | 106.5 | 115.4 |
| 83.4 | 60.7 | 81.4 | 98.2 | 60.9 | 95.9 | 61.9 | 66.5 | 39.8 | 62.8 | 54.6 | 72.9 | 94.2 | 73.7 |
| 94.9 | 67.7 | 87.6 | 88.3 | 58.6 | 98.7 | 65.1 | 72.0 | 37.1 | 64.5 | 57.4 | 84.8 | 96.8 | 101.1 |
| ▲ 0.7 | 0.4 | ▲ 2.4 | ▲ 9.5 | ▲ 7.9 | ▲ 1.2 | ▲ 8.2 | 0.6 | 5.4 | ▲ 21.6 | ▲ 5.9 | ▲ 39.9 | ▲ 6.2 | ▲ 2.8 |
| 92.8 | 84.7 | 97.1 | 111.7 | 69.6 | 107.0 | 70.6 | 77.9 | 36.2 | 60.9 | 63.2 | 115.7 | 100.9 | 95.2 |
| 96.5 | 70.9 | 94.0 | 104.5 | 60.9 | 110.4 | 71.2 | 72.8 | 33.2 | 79.2 | 62.3 | 146.2 | 101.2 | 102.6 |
| 97.1 | 62.9 | 92.6 | 110.7 | 60.1 | 103.9 | 69.1 | 82.5 | 40.4 | 71.3 | 60.1 | 91.1 | 105.7 | 104.9 |
| 99.7 | 84.6 | 98.7 | 111.8 | 60.6 | 104.1 | 71.7 | 80.8 | 39.0 | 67.8 | 64.2 | 113.3 | 102.1 | 101.3 |
| 94.9 | 63.7 | 94.6 | 104.2 | 55.9 | 100.8 | 70.4 | 68.2 | 36.7 | 78.5 | 63.2 | 108.9 | 99.9 | 106.7 |
| 102.5 | 80.4 | 94.5 | 112.0 | 64.1 | 98.8 | 72.6 | 77.7 | 41.3 | 66.9 | 61.8 | 112.7 | 116.3 | 177.3 |
| 80.2 | 61.5 | 91.2 | 107.6 | 64.8 | 98.8 | 69.1 | 73.5 | 41.4 | 72.5 | 61.1 | 64.7 | 108.1 | 52.3 |
| 94.6 | 105.6 | 102.2 | 112.1 | 69.3 | 103.4 | 68.9 | 75.8 | 41.9 | 69.3 | 61.2 | 71.6 | 106.0 | 100.2 |
| 92.6 | 65.3 | 95.9 | 104.5 | 62.5 | 96.4 | 71.4 | 77.9 | 48.9 | 65.1 | 62.6 | 104.1 | 102.1 | 109.6 |
| 89.9 | 66.5 | 94.9 | 107.9 | 60.2 | 96.7 | 68.3 | 76.0 | 40.4 | 66.7 | 60.1 | 68.6 | 104.9 | 101.1 |
| 90.1 | 93.9 | 95.6 | 106.4 | 61.7 | 99.3 | 68.2 | 78.1 | 47.1 | 67.1 | 59.8 | 72.0 | 104.1 | 89.6 |
| 93.9 | 94.9 | 90.7 | 109.3 | 58.4 | 106.1 | 67.6 | 77.8 | 40.4 | 70.6 | 56.9 | 92.3 | 105.4 | 97.0 |
| 95.3 | 69.9 | 92.5 | 110.1 | 68.1 | 102.4 | 64.7 | 70.0 | 39.0 | 64.2 | 58.7 | 69.0 | 93.7 | 99.4 |
| 95.2 | 71.0 | 90.8 | 93.1 | 55.9 | 108.4 | 64.9 | 72.2 | 35.0 | 59.8 | 58.7 | 85.3 | 93.4 | 95.2 |
| ▲ 0.1 | 1.6 | ▲ 1.8 | ▲ 15.4 | ▲ 17.9 | 5.9 | 0.3 | 3.1 | ▲ 10.3 | ▲ 6.9 | 0.0 | 23.6 | ▲ 0.3 | ▲ 4.2 |

第1-2表 埼玉県鉱工業 出荷指数（業種分類）

| 項目 | 業種分類 | | | | | | | | | | | | |
|----------------------------|------------|---------|-------|--------|--------|--------|---------|---------|-------------|--------|----------|---------|-------|
| | 鉱工業総合 | 製造工業総合 | 鉄鋼業 | 非鉄金属工業 | 金属製品工業 | 汎用機械工業 | 生産用機械工業 | 業務用機械工業 | 電子部品・デバイス工業 | 電気機械工業 | 情報通信機械工業 | 輸送機械工業 | |
| ウェイト | 10,000.0 | 9,994.6 | 234.3 | 554.6 | 388.5 | 444.3 | 496.3 | 334.2 | 296.2 | 458.9 | 401.7 | 1,605.1 | |
| 品目数 | 201 | 199 | 12 | 8 | 10 | 13 | 11 | 5 | 13 | 24 | 7 | 9 | |
| 原 指 数 | 平成30年平均 | 102.2 | 102.2 | 98.0 | 107.0 | 93.5 | 112.0 | 122.6 | 80.2 | 123.1 | 105.3 | 65.3 | 103.7 |
| | 令和1年平均 | 96.2 | 96.2 | 92.7 | 99.0 | 92.9 | 96.0 | 117.6 | 76.1 | 114.9 | 88.3 | 67.5 | 92.0 |
| | 令和2年平均 | 82.8 | 82.8 | 87.0 | 78.6 | 87.2 | 90.3 | 75.9 | 61.7 | 100.9 | 85.1 | 62.5 | 59.0 |
| | 令和3年平均 | 85.1 | 85.1 | 93.4 | 84.9 | 89.7 | 118.0 | 71.5 | 69.0 | 99.0 | 96.0 | 61.6 | 56.8 |
| | 令和4年平均 | 83.6 | 83.6 | 91.9 | 80.6 | 68.8 | 126.2 | 70.3 | 70.2 | 93.1 | 100.3 | 60.6 | 54.0 |
| | 令和4年1月 | 73.5 | 73.5 | 83.8 | 74.2 | 64.2 | 105.3 | 51.1 | 67.8 | 87.3 | 90.3 | 55.4 | 39.2 |
| | 2月 | 78.4 | 78.4 | 89.5 | 78.1 | 66.9 | 113.2 | 49.0 | 77.3 | 90.4 | 92.4 | 60.7 | 50.3 |
| | 3月 | 94.3 | 94.3 | 104.0 | 89.1 | 75.0 | 133.5 | 98.2 | 101.2 | 99.4 | 119.1 | 78.7 | 65.5 |
| | 4月 | 84.9 | 84.9 | 97.5 | 79.0 | 69.2 | 131.8 | 95.3 | 65.1 | 95.2 | 94.6 | 67.0 | 42.3 |
| | 5月 | 76.5 | 76.5 | 86.3 | 78.2 | 63.0 | 116.7 | 55.0 | 71.2 | 85.7 | 83.8 | 58.4 | 48.3 |
| | 6月 | 90.7 | 90.7 | 95.2 | 90.5 | 68.4 | 139.6 | 106.2 | 78.5 | 95.1 | 106.1 | 65.2 | 75.0 |
| | 7月 | 84.5 | 84.5 | 95.3 | 82.9 | 70.8 | 128.3 | 68.0 | 63.3 | 98.3 | 101.4 | 59.6 | 59.4 |
| | 8月 | 79.3 | 79.2 | 75.8 | 73.5 | 66.1 | 114.3 | 71.5 | 59.3 | 94.2 | 98.9 | 50.0 | 50.9 |
| | 9月 | 81.7 | 81.7 | 91.4 | 83.5 | 70.1 | 133.1 | 59.1 | 66.1 | 98.5 | 107.8 | 51.9 | 51.6 |
| | 10月 | 90.0 | 90.0 | 101.1 | 81.2 | 70.7 | 134.6 | 66.5 | 63.5 | 93.9 | 104.1 | 56.5 | 51.0 |
| | 11月 | 85.7 | 85.7 | 98.0 | 83.1 | 73.0 | 128.3 | 58.3 | 63.5 | 91.2 | 102.4 | 63.9 | 65.4 |
| | 12月 | 84.0 | 84.0 | 85.0 | 73.8 | 68.6 | 135.1 | 65.3 | 65.7 | 88.0 | 102.5 | 59.4 | 48.6 |
| | 令和5年1月 | 73.3 | 73.3 | 84.8 | 62.8 | 64.5 | 107.9 | 56.4 | 77.2 | 75.5 | 95.5 | 52.4 | 43.9 |
| | 2月 | 78.2 | 78.2 | 85.4 | 71.4 | 64.4 | 116.1 | 42.4 | 75.0 | 83.4 | 98.7 | 55.2 | 54.0 |
| | 【前年同月比(%)】 | ▲ 0.3 | ▲ 0.3 | ▲ 4.6 | ▲ 8.6 | ▲ 3.7 | 2.6 | ▲ 13.5 | ▲ 3.0 | ▲ 7.7 | 6.8 | ▲ 9.1 | 7.4 |
| 季 節 調 整 指 数 | 令和4年1月 | 78.9 | 78.9 | 88.1 | 77.1 | 71.5 | 115.0 | 48.3 | 66.1 | 92.3 | 91.0 | 56.6 | 44.1 |
| | 2月 | 81.3 | 81.3 | 93.9 | 75.3 | 72.2 | 119.2 | 52.9 | 74.8 | 94.5 | 88.3 | 55.6 | 48.3 |
| | 3月 | 86.0 | 86.0 | 98.7 | 80.5 | 70.3 | 113.6 | 88.7 | 90.5 | 90.7 | 103.3 | 71.9 | 55.2 |
| | 4月 | 84.9 | 84.8 | 96.1 | 79.2 | 69.8 | 132.9 | 107.6 | 68.4 | 97.8 | 100.9 | 70.6 | 45.4 |
| | 5月 | 85.0 | 85.0 | 94.2 | 88.6 | 66.5 | 121.3 | 66.8 | 80.3 | 92.1 | 95.0 | 64.7 | 57.6 |
| | 6月 | 89.0 | 89.0 | 91.1 | 89.9 | 69.1 | 125.4 | 121.1 | 80.4 | 95.4 | 102.2 | 64.0 | 70.8 |
| | 7月 | 83.8 | 83.8 | 95.1 | 85.3 | 68.0 | 129.8 | 71.2 | 63.5 | 99.9 | 103.3 | 59.1 | 60.9 |
| | 8月 | 85.0 | 84.9 | 83.7 | 86.2 | 69.7 | 127.3 | 76.9 | 66.7 | 99.8 | 110.7 | 56.3 | 58.3 |
| | 9月 | 80.2 | 80.2 | 88.1 | 82.2 | 68.4 | 126.5 | 63.4 | 59.9 | 94.9 | 103.4 | 52.9 | 49.5 |
| | 10月 | 88.4 | 88.4 | 95.1 | 78.1 | 68.1 | 142.0 | 59.4 | 66.2 | 92.3 | 107.1 | 58.7 | 50.5 |
| | 11月 | 82.0 | 82.0 | 94.1 | 75.0 | 67.2 | 135.5 | 51.4 | 64.3 | 89.1 | 100.6 | 59.2 | 59.0 |
| | 12月 | 80.4 | 80.4 | 84.4 | 73.7 | 67.4 | 130.0 | 49.4 | 62.8 | 82.1 | 98.9 | 56.5 | 48.4 |
| | 令和5年1月 | 78.4 | 78.4 | 90.5 | 64.7 | 71.5 | 118.3 | 55.7 | 75.0 | 79.1 | 95.9 | 52.3 | 48.0 |
| | 2月 | 80.0 | 80.0 | 88.7 | 68.0 | 68.9 | 120.4 | 44.4 | 71.7 | 85.9 | 93.4 | 50.5 | 51.1 |
| 【前月比(%)】 | 2.0 | 2.0 | ▲ 2.0 | 5.1 | ▲ 3.6 | 1.8 | ▲ 20.3 | ▲ 4.4 | 8.6 | ▲ 2.6 | ▲ 3.4 | 6.5 | |

(平成27年=100)

| 窯業・土石製品工業 | 化学工業 | プラスチック製品工業 | パルプ・紙・紙加工品工業 | 繊維工業 | 食料品工業 | その他工業総合 | | | | | | | 鉱業 |
|-----------|---------|------------|--------------|-------|---------|---------|--------|--------|-------|-------|----------|-------|-------|
| | | | | | | | ゴム製品工業 | 皮革製品工業 | 家具工業 | 印刷業 | 木材・木製品工業 | その他工業 | |
| 218.3 | 1,365.8 | 539.7 | 390.6 | 73.7 | 1,487.0 | 705.4 | 99.7 | 20.9 | 66.9 | 299.0 | 34.3 | 184.6 | 5.4 |
| 14 | 7 | 12 | 7 | 6 | 23 | 18 | 3 | 2 | 3 | 3 | 2 | 5 | 2 |
| 101.9 | 93.9 | 104.6 | 109.1 | 105.9 | 108.6 | 97.5 | 89.7 | 85.4 | 107.9 | 89.1 | 146.8 | 103.7 | 101.1 |
| 97.5 | 90.8 | 100.6 | 107.2 | 98.2 | 107.6 | 91.6 | 84.1 | 70.0 | 105.8 | 81.5 | 130.2 | 102.2 | 98.2 |
| 96.8 | 80.4 | 92.3 | 102.4 | 82.7 | 107.7 | 79.3 | 71.0 | 49.8 | 94.6 | 68.3 | 117.5 | 92.2 | 94.5 |
| 95.6 | 82.1 | 92.6 | 105.5 | 82.6 | 107.2 | 80.2 | 70.2 | 39.9 | 85.0 | 66.3 | 121.4 | 103.1 | 92.0 |
| 94.8 | 88.2 | 93.0 | 105.3 | 79.7 | 101.4 | 77.4 | 73.1 | 41.9 | 65.2 | 61.3 | 93.4 | 111.4 | 92.3 |
| 80.5 | 71.6 | 80.2 | 94.0 | 75.5 | 99.4 | 74.2 | 68.9 | 36.0 | 54.5 | 58.4 | 119.6 | 105.7 | 77.0 |
| 95.1 | 74.8 | 86.6 | 97.3 | 81.4 | 99.8 | 79.9 | 67.7 | 39.4 | 74.7 | 61.0 | 131.0 | 114.2 | 96.9 |
| 102.0 | 93.9 | 101.1 | 117.1 | 108.7 | 105.9 | 85.3 | 83.3 | 52.1 | 78.8 | 66.2 | 92.6 | 122.0 | 97.6 |
| 91.2 | 91.8 | 101.9 | 108.9 | 79.2 | 109.1 | 70.9 | 73.6 | 51.4 | 61.3 | 62.7 | 113.1 | 80.7 | 91.1 |
| 92.4 | 71.1 | 96.5 | 91.7 | 70.1 | 100.6 | 69.6 | 61.8 | 35.2 | 57.9 | 57.3 | 105.3 | 95.2 | 93.3 |
| 96.5 | 81.2 | 102.9 | 109.2 | 69.4 | 100.3 | 82.8 | 75.3 | 31.8 | 65.9 | 60.7 | 113.9 | 128.8 | 97.6 |
| 85.3 | 83.0 | 103.6 | 109.3 | 63.0 | 102.4 | 77.5 | 75.0 | 46.9 | 63.0 | 59.4 | 68.0 | 118.6 | 67.8 |
| 92.9 | 85.0 | 90.5 | 102.5 | 77.9 | 97.5 | 72.1 | 65.0 | 41.6 | 61.8 | 56.7 | 59.0 | 110.5 | 95.6 |
| 96.2 | 87.3 | 90.0 | 107.0 | 80.4 | 90.8 | 80.6 | 77.6 | 58.5 | 66.9 | 65.6 | 85.8 | 113.0 | 93.6 |
| 98.6 | 137.7 | 87.7 | 107.1 | 81.4 | 101.0 | 77.2 | 78.7 | 42.2 | 63.2 | 64.1 | 69.5 | 108.2 | 97.3 |
| 104.2 | 89.2 | 87.7 | 110.7 | 87.1 | 100.9 | 79.0 | 76.2 | 37.2 | 68.4 | 62.9 | 70.7 | 116.6 | 97.3 |
| 102.6 | 91.9 | 87.2 | 109.1 | 82.1 | 109.5 | 79.9 | 73.7 | 30.4 | 65.8 | 60.1 | 91.9 | 123.7 | 102.3 |
| 80.9 | 77.1 | 81.4 | 88.8 | 66.8 | 93.5 | 67.7 | 65.0 | 39.0 | 52.8 | 54.6 | 62.8 | 100.0 | 71.7 |
| 95.0 | 83.0 | 86.3 | 91.1 | 75.7 | 98.9 | 72.8 | 71.5 | 39.6 | 69.7 | 57.4 | 74.9 | 102.9 | 90.1 |
| ▲ 0.1 | 11.0 | ▲ 0.3 | ▲ 6.4 | ▲ 7.0 | ▲ 0.9 | ▲ 8.9 | 5.6 | 0.5 | ▲ 6.7 | ▲ 5.9 | ▲ 42.8 | ▲ 9.9 | ▲ 7.0 |
| 93.1 | 82.6 | 92.9 | 110.3 | 84.8 | 109.0 | 77.3 | 72.1 | 37.1 | 60.6 | 62.9 | 108.5 | 104.8 | 93.5 |
| 97.3 | 83.5 | 92.6 | 104.4 | 73.4 | 110.0 | 77.7 | 67.6 | 35.9 | 66.0 | 62.1 | 140.0 | 108.2 | 94.9 |
| 102.9 | 85.7 | 93.6 | 105.6 | 91.7 | 101.2 | 76.0 | 73.7 | 42.9 | 63.9 | 59.1 | 86.1 | 113.9 | 93.1 |
| 97.9 | 88.5 | 96.3 | 105.1 | 78.4 | 104.3 | 77.6 | 73.8 | 43.3 | 68.9 | 63.4 | 108.9 | 107.9 | 96.1 |
| 99.0 | 81.5 | 95.1 | 101.8 | 78.1 | 101.1 | 79.2 | 69.5 | 40.3 | 69.5 | 64.2 | 110.1 | 113.0 | 99.0 |
| 100.8 | 79.5 | 95.5 | 110.5 | 79.3 | 98.2 | 84.0 | 74.9 | 40.6 | 67.5 | 62.5 | 113.9 | 125.0 | 129.3 |
| 81.6 | 82.8 | 93.6 | 106.4 | 72.8 | 98.0 | 77.5 | 72.4 | 44.4 | 63.8 | 62.1 | 63.5 | 112.4 | 61.4 |
| 95.4 | 86.2 | 92.6 | 107.6 | 88.2 | 101.9 | 77.1 | 75.5 | 38.5 | 66.0 | 61.9 | 67.7 | 112.8 | 94.1 |
| 94.1 | 82.8 | 89.9 | 104.5 | 72.2 | 92.7 | 76.7 | 74.9 | 50.6 | 64.0 | 62.4 | 98.0 | 100.9 | 97.7 |
| 91.8 | 132.4 | 92.0 | 103.7 | 78.2 | 97.7 | 77.7 | 79.2 | 42.2 | 66.3 | 60.1 | 67.9 | 117.0 | 91.1 |
| 93.0 | 86.8 | 90.4 | 103.8 | 77.8 | 99.5 | 73.6 | 71.0 | 49.0 | 64.9 | 59.5 | 67.6 | 107.8 | 85.8 |
| 95.2 | 87.9 | 92.3 | 103.4 | 81.3 | 106.1 | 77.4 | 75.5 | 39.3 | 64.7 | 56.7 | 90.6 | 117.0 | 88.6 |
| 93.5 | 87.7 | 93.1 | 102.7 | 73.7 | 102.3 | 71.0 | 67.2 | 39.2 | 58.4 | 58.4 | 60.9 | 102.9 | 90.2 |
| 96.2 | 90.7 | 92.5 | 97.2 | 68.3 | 108.7 | 69.8 | 70.3 | 36.1 | 60.5 | 58.5 | 76.3 | 94.3 | 85.5 |
| 2.9 | 3.4 | ▲ 0.6 | ▲ 5.4 | ▲ 7.3 | 6.3 | ▲ 1.7 | 4.6 | ▲ 7.9 | 3.6 | 0.2 | 25.3 | ▲ 8.4 | ▲ 5.2 |

第1-3表 埼玉県鉱工業 在庫指数（業種分類）

| 項目 | 埼玉県鉱工業 在庫指数（業種分類） | | | | | | | | | | | | |
|----------------------------|-------------------|---------|-------|--------|--------|--------|---------|---------|-------------|--------|----------|---------|------|
| | 鉱工業総合 | 製造工業総合 | 鉄鋼業 | 非鉄金属工業 | 金属製品工業 | 汎用機械工業 | 生産用機械工業 | 業務用機械工業 | 電子部品・デバイス工業 | 電気機械工業 | 情報通信機械工業 | 輸送機械工業 | |
| ウェイト | 10,000.0 | 9,993.0 | 449.2 | 471.6 | 754.3 | 318.3 | 775.9 | — | 641.1 | 890.6 | 154.7 | 1,678.6 | |
| 品目数 | 108 | 107 | 10 | 5 | 5 | 3 | 6 | — | 7 | 7 | 3 | 5 | |
| 原 指 数 | 平成30年末 | 88.5 | 88.5 | 89.4 | 108.6 | 92.4 | 69.8 | 78.4 | — | 116.3 | 104.8 | 110.6 | 19.7 |
| | 令和1年末 | 88.3 | 88.4 | 85.4 | 77.8 | 105.4 | 43.9 | 81.3 | — | 115.5 | 103.6 | 93.5 | 23.9 |
| | 令和2年末 | 84.5 | 84.5 | 83.4 | 75.8 | 102.3 | 28.9 | 67.8 | — | 135.9 | 87.3 | 67.9 | 21.6 |
| | 令和3年末 | 87.7 | 87.6 | 91.3 | 77.8 | 121.9 | 35.5 | 65.3 | — | 114.2 | 92.3 | 99.2 | 28.3 |
| | 令和4年末 | 84.4 | 84.3 | 94.9 | 83.2 | 69.0 | 34.0 | 70.0 | — | 135.2 | 86.4 | 173.5 | 11.4 |
| | 令和4年1月末 | 84.5 | 84.5 | 94.6 | 73.3 | 66.6 | 39.5 | 67.2 | — | 126.4 | 89.9 | 108.5 | 16.6 |
| | 2月末 | 84.9 | 84.8 | 95.4 | 73.2 | 67.6 | 33.0 | 78.7 | — | 117.7 | 88.5 | 125.5 | 16.0 |
| | 3月末 | 80.5 | 80.4 | 91.5 | 69.2 | 69.2 | 35.3 | 67.3 | — | 113.9 | 77.0 | 127.0 | 14.9 |
| | 4月末 | 81.8 | 81.7 | 91.7 | 77.0 | 68.6 | 31.9 | 60.6 | — | 107.1 | 84.3 | 175.2 | 17.8 |
| | 5月末 | 81.9 | 81.8 | 92.2 | 80.8 | 67.6 | 31.0 | 65.5 | — | 114.6 | 89.1 | 154.9 | 11.5 |
| | 6月末 | 83.3 | 83.3 | 91.4 | 74.2 | 69.0 | 32.5 | 63.5 | — | 123.1 | 93.6 | 149.3 | 12.8 |
| | 7月末 | 83.7 | 83.7 | 94.0 | 74.7 | 67.9 | 34.5 | 77.2 | — | 111.1 | 96.3 | 149.5 | 11.1 |
| | 8月末 | 83.0 | 83.0 | 88.7 | 71.6 | 67.3 | 33.7 | 82.6 | — | 120.2 | 94.6 | 160.9 | 9.4 |
| | 9月末 | 82.0 | 81.9 | 91.8 | 75.5 | 69.5 | 32.3 | 72.3 | — | 116.8 | 87.6 | 155.2 | 11.5 |
| | 10月末 | 83.1 | 83.1 | 97.8 | 77.6 | 69.6 | 32.0 | 72.7 | — | 117.2 | 86.4 | 170.7 | 9.6 |
| | 11月末 | 85.6 | 85.5 | 99.8 | 80.1 | 70.1 | 35.8 | 71.8 | — | 124.7 | 91.3 | 187.2 | 12.8 |
| | 12月末 | 84.4 | 84.3 | 94.9 | 83.2 | 69.0 | 34.0 | 70.0 | — | 135.2 | 86.4 | 173.5 | 11.4 |
| | 令和5年1月末 | 88.4 | 88.3 | 101.9 | 82.5 | 68.8 | 37.0 | 86.3 | — | 137.3 | 90.8 | 168.9 | 12.2 |
| | 2月末 | 88.5 | 88.4 | 106.5 | 79.1 | 69.5 | 37.2 | 92.3 | — | 122.3 | 95.6 | 200.0 | 10.5 |
| 【前年同月比(%)】 | 4.2 | 4.2 | 11.6 | 8.1 | 2.8 | 12.7 | 17.3 | — | 3.9 | 8.0 | 59.4 | ▲ 34.4 | |
| 季 節 調 整 指 数 | 令和4年1月末 | 83.6 | 83.6 | 97.4 | 73.2 | 67.5 | 34.8 | 68.3 | — | 124.3 | 92.0 | 113.0 | 14.2 |
| | 2月末 | 85.4 | 85.3 | 94.4 | 72.7 | 66.8 | 31.2 | 74.4 | — | 119.8 | 97.3 | 125.2 | 15.5 |
| | 3月末 | 84.4 | 84.4 | 89.5 | 67.9 | 69.2 | 38.1 | 76.4 | — | 118.8 | 92.5 | 132.7 | 22.5 |
| | 4月末 | 84.5 | 84.4 | 89.8 | 76.4 | 68.1 | 35.4 | 61.3 | — | 112.9 | 88.3 | 167.4 | 23.1 |
| | 5月末 | 81.4 | 81.4 | 87.3 | 82.4 | 66.7 | 33.9 | 62.7 | — | 118.8 | 91.9 | 155.0 | 12.6 |
| | 6月末 | 82.3 | 82.3 | 89.2 | 74.6 | 67.8 | 32.2 | 63.9 | — | 124.1 | 91.0 | 143.2 | 13.7 |
| | 7月末 | 81.4 | 81.4 | 94.1 | 73.7 | 66.1 | 34.1 | 74.8 | — | 109.2 | 90.2 | 151.2 | 9.9 |
| | 8月末 | 82.4 | 82.4 | 89.8 | 71.6 | 66.1 | 35.6 | 78.5 | — | 119.1 | 90.5 | 147.4 | 8.8 |
| | 9月末 | 82.7 | 82.6 | 91.6 | 75.3 | 69.0 | 35.6 | 72.9 | — | 112.9 | 85.8 | 157.0 | 12.1 |
| | 10月末 | 82.6 | 82.5 | 100.9 | 80.0 | 69.6 | 31.4 | 72.4 | — | 113.9 | 79.2 | 158.1 | 9.6 |
| | 11月末 | 84.3 | 84.1 | 103.7 | 80.5 | 72.8 | 32.6 | 72.1 | — | 118.7 | 85.0 | 198.5 | 11.1 |
| | 12月末 | 83.9 | 83.7 | 97.5 | 82.1 | 73.0 | 31.7 | 71.2 | — | 134.3 | 84.3 | 192.3 | 9.4 |
| | 令和5年1月末 | 87.4 | 87.3 | 104.9 | 82.4 | 69.7 | 32.6 | 87.7 | — | 135.0 | 93.0 | 176.0 | 10.5 |
| | 2月末 | 89.0 | 88.9 | 105.4 | 78.6 | 68.6 | 35.2 | 87.3 | — | 124.5 | 105.1 | 199.5 | 10.1 |
| 【前月比(%)】 | 1.8 | 1.8 | 0.5 | ▲ 4.6 | ▲ 1.6 | 8.0 | ▲ 0.5 | — | ▲ 7.8 | 13.0 | 13.4 | ▲ 3.8 | |

(平成27年=100)

| 窯業・土石製品工業 | 化学工業 | プラスチック製品工業 | パルプ・紙・紙加工品工業 | 繊維工業 | 食料品工業 | その他工業総合 | | | | | | | 鉱業 |
|-----------|---------|------------|--------------|-------|--------|---------|--------|--------|-------|-----|----------|-------|--------|
| | | | | | | | ゴム製品工業 | 皮革製品工業 | 家具工業 | 印刷業 | 木材・木製品工業 | その他工業 | |
| 514.5 | 1,125.9 | 969.8 | 575.8 | 172.2 | 120.8 | 379.7 | 119.8 | 29.0 | 73.4 | — | — | 157.5 | 7.0 |
| 12 | 5 | 12 | 7 | 6 | 4 | 10 | 2 | 2 | 3 | — | — | 3 | 1 |
| 89.8 | 123.2 | 103.9 | 97.4 | 141.2 | 100.6 | 116.7 | 116.1 | 122.2 | 104.5 | — | — | 121.9 | 93.6 |
| 97.2 | 122.0 | 101.0 | 107.8 | 149.7 | 106.1 | 116.5 | 124.6 | 96.8 | 95.9 | — | — | 123.6 | 82.7 |
| 85.4 | 119.6 | 93.6 | 116.2 | 169.6 | 109.0 | 109.4 | 123.6 | 79.4 | 85.4 | — | — | 115.4 | 127.8 |
| 81.2 | 113.1 | 101.7 | 137.6 | 170.7 | 88.9 | 101.4 | 139.3 | 62.0 | 60.8 | — | — | 98.6 | 181.7 |
| 84.7 | 112.1 | 102.0 | 149.9 | 161.5 | 90.1 | 105.9 | 144.8 | 61.6 | 71.6 | — | — | 100.6 | 141.0 |
| 84.3 | 117.3 | 108.2 | 149.6 | 170.7 | 90.6 | 104.4 | 139.2 | 63.6 | 63.7 | — | — | 104.5 | 160.5 |
| 90.7 | 117.7 | 109.4 | 145.9 | 168.9 | 92.0 | 98.6 | 137.9 | 57.2 | 71.9 | — | — | 88.9 | 156.2 |
| 80.5 | 115.1 | 102.7 | 148.1 | 152.1 | 94.7 | 91.4 | 139.6 | 66.2 | 50.5 | — | — | 78.3 | 168.1 |
| 79.6 | 116.9 | 101.8 | 148.5 | 146.9 | 98.9 | 93.9 | 139.1 | 57.9 | 50.1 | — | — | 86.6 | 168.6 |
| 83.7 | 112.9 | 99.7 | 156.7 | 145.2 | 89.8 | 98.9 | 138.4 | 60.4 | 65.4 | — | — | 91.6 | 170.3 |
| 87.8 | 117.7 | 96.5 | 160.6 | 147.0 | 91.0 | 98.7 | 140.5 | 68.8 | 60.1 | — | — | 90.4 | 172.6 |
| 84.4 | 118.8 | 92.6 | 167.5 | 145.5 | 89.7 | 101.9 | 139.9 | 68.4 | 70.0 | — | — | 93.9 | 139.7 |
| 88.3 | 113.9 | 92.4 | 158.8 | 143.5 | 87.0 | 99.8 | 137.6 | 69.8 | 73.5 | — | — | 88.9 | 142.5 |
| 83.9 | 110.3 | 96.0 | 151.8 | 149.1 | 92.8 | 111.2 | 137.9 | 55.6 | 62.5 | — | — | 123.8 | 154.2 |
| 83.2 | 110.5 | 98.9 | 162.2 | 153.8 | 85.6 | 112.1 | 136.9 | 52.7 | 69.3 | — | — | 124.1 | 142.4 |
| 81.3 | 109.4 | 104.9 | 154.7 | 164.6 | 88.5 | 119.6 | 144.7 | 56.5 | 67.0 | — | — | 136.5 | 133.5 |
| 84.7 | 112.1 | 102.0 | 149.9 | 161.5 | 90.1 | 105.9 | 144.8 | 61.6 | 71.6 | — | — | 100.6 | 141.0 |
| 88.6 | 114.7 | 106.1 | 168.0 | 162.8 | 80.5 | 104.6 | 142.0 | 55.0 | 87.1 | — | — | 93.5 | 129.4 |
| 90.8 | 120.6 | 108.3 | 153.8 | 155.7 | 80.4 | 100.0 | 139.5 | 52.2 | 67.1 | — | — | 94.1 | 134.0 |
| 0.1 | 2.5 | ▲ 1.0 | 5.4 | ▲ 7.8 | ▲ 12.6 | 1.4 | 1.2 | ▲ 8.7 | ▲ 6.7 | — | — | 5.8 | ▲ 14.2 |
| 86.9 | 114.3 | 109.3 | 152.8 | 157.1 | 93.2 | 95.9 | 139.1 | 61.4 | 48.6 | — | — | 97.1 | 171.4 |
| 88.5 | 114.7 | 107.1 | 145.8 | 162.6 | 92.6 | 98.8 | 139.9 | 54.0 | 64.2 | — | — | 91.7 | 157.5 |
| 80.4 | 115.0 | 98.1 | 151.3 | 153.9 | 96.7 | 100.7 | 143.3 | 68.3 | 72.9 | — | — | 85.5 | 157.0 |
| 82.2 | 116.4 | 99.2 | 159.4 | 156.3 | 95.7 | 103.3 | 142.0 | 61.8 | 55.7 | — | — | 101.8 | 142.3 |
| 78.1 | 110.7 | 96.9 | 155.5 | 156.5 | 90.4 | 102.5 | 139.6 | 60.8 | 70.0 | — | — | 96.5 | 143.8 |
| 88.1 | 114.1 | 93.6 | 148.8 | 156.9 | 93.8 | 100.2 | 137.8 | 64.2 | 60.4 | — | — | 96.4 | 200.0 |
| 84.0 | 117.6 | 92.0 | 154.5 | 153.6 | 92.1 | 96.6 | 134.6 | 60.9 | 68.4 | — | — | 87.9 | 162.1 |
| 84.2 | 115.9 | 96.7 | 159.9 | 151.4 | 85.8 | 98.9 | 135.8 | 65.2 | 71.3 | — | — | 88.9 | 152.3 |
| 84.1 | 116.0 | 101.9 | 150.4 | 150.2 | 94.2 | 115.3 | 138.4 | 61.8 | 77.2 | — | — | 122.8 | 152.7 |
| 88.1 | 114.1 | 101.5 | 161.7 | 150.0 | 83.1 | 106.5 | 136.0 | 60.2 | 62.1 | — | — | 111.9 | 148.5 |
| 83.9 | 111.9 | 105.4 | 151.5 | 153.3 | 89.9 | 113.8 | 144.6 | 58.4 | 63.8 | — | — | 121.9 | 137.8 |
| 84.7 | 112.5 | 104.0 | 163.6 | 147.7 | 83.9 | 103.9 | 145.9 | 62.3 | 69.8 | — | — | 101.1 | 134.7 |
| 91.3 | 111.7 | 107.2 | 171.6 | 149.9 | 82.8 | 96.1 | 141.9 | 53.1 | 66.5 | — | — | 86.8 | 138.2 |
| 88.6 | 117.5 | 106.1 | 153.6 | 149.9 | 81.0 | 100.3 | 141.6 | 49.2 | 59.9 | — | — | 97.1 | 135.1 |
| ▲ 3.0 | 5.2 | ▲ 1.0 | ▲ 10.5 | 0.0 | ▲ 2.2 | 4.4 | ▲ 0.2 | ▲ 7.3 | ▲ 9.9 | — | — | 11.9 | ▲ 2.2 |

第1-4表 埼玉県鉱工業 在庫率指数（業種分類）

| 項目 | 鉱工業総合 | | 製造工業総合 | | | | | | | | | | |
|----------------------------|---------|---------|--------|--------|---------|---------|-------------|--------|----------|--------|-------|---------|------|
| | 鉄鋼業 | 非鉄金属工業 | 金属製品工業 | 汎用機械工業 | 生産用機械工業 | 業務用機械工業 | 電子部品・デバイス工業 | 電気機械工業 | 情報通信機械工業 | 輸送機械工業 | | | |
| ウェイト | 9,104.0 | 9,097.0 | 448.4 | 471.6 | 754.3 | 318.3 | 274.3 | — | 258.6 | 879.5 | 154.7 | 1,678.6 | |
| 品目数 | 102 | 101 | 9 | 5 | 5 | 3 | 4 | — | 5 | 6 | 3 | 5 | |
| 原 指 数 | 平成30年平均 | 91.9 | 91.9 | 101.0 | 79.3 | 108.6 | 117.7 | 104.2 | — | 101.0 | 122.7 | 92.8 | 31.8 |
| | 令和1年平均 | 96.0 | 96.1 | 97.4 | 80.5 | 118.7 | 94.6 | 128.0 | — | 140.3 | 119.7 | 95.2 | 30.2 |
| | 令和2年平均 | 107.3 | 107.3 | 99.4 | 92.9 | 133.0 | 78.6 | 198.2 | — | 184.8 | 111.0 | 70.2 | 30.8 |
| | 令和3年平均 | 106.4 | 106.4 | 93.3 | 73.2 | 132.5 | 89.1 | 287.5 | — | 163.6 | 114.9 | 71.4 | 34.7 |
| | 令和4年平均 | 105.4 | 105.4 | 103.3 | 76.9 | 90.0 | 155.2 | 212.3 | — | 186.9 | 112.1 | 112.0 | 27.1 |
| | 令和4年1月 | 118.3 | 118.3 | 117.4 | 82.9 | 102.6 | 134.9 | 208.0 | — | 195.7 | 133.5 | 87.0 | 34.7 |
| | 2月 | 104.1 | 104.1 | 111.8 | 76.1 | 95.2 | 92.9 | 132.4 | — | 181.0 | 114.8 | 98.3 | 27.1 |
| | 3月 | 80.8 | 80.7 | 89.9 | 62.5 | 85.0 | 91.2 | 44.0 | — | 174.4 | 74.1 | 81.5 | 19.6 |
| | 4月 | 107.4 | 107.4 | 111.5 | 80.9 | 89.4 | 86.7 | 330.2 | — | 207.1 | 118.5 | 134.0 | 47.4 |
| | 5月 | 113.9 | 113.8 | 116.3 | 83.8 | 92.3 | 88.9 | 336.3 | — | 199.9 | 150.7 | 110.1 | 28.0 |
| | 6月 | 98.9 | 98.9 | 94.8 | 65.7 | 91.8 | 83.0 | 93.5 | — | 190.7 | 118.9 | 110.0 | 25.7 |
| | 7月 | 107.7 | 107.6 | 98.2 | 74.4 | 88.0 | 120.0 | 171.0 | — | 202.2 | 121.2 | 115.2 | 23.2 |
| | 8月 | 115.4 | 115.4 | 103.8 | 78.8 | 83.2 | 445.9 | 151.5 | — | 180.9 | 130.6 | 113.0 | 21.8 |
| | 9月 | 96.7 | 96.6 | 94.2 | 72.6 | 89.7 | 160.8 | 82.4 | — | 187.0 | 91.6 | 100.9 | 25.8 |
| | 10月 | 114.7 | 114.7 | 94.5 | 76.2 | 87.5 | 126.7 | 684.8 | — | 181.6 | 99.5 | 107.8 | 21.2 |
| | 11月 | 100.2 | 100.2 | 97.8 | 78.9 | 87.2 | 115.8 | 157.0 | — | 172.2 | 99.4 | 164.4 | 25.0 |
| | 12月 | 107.0 | 106.9 | 109.0 | 89.5 | 87.9 | 315.3 | 156.2 | — | 170.1 | 92.2 | 122.0 | 25.3 |
| | 令和5年1月 | 122.8 | 122.7 | 122.9 | 106.8 | 94.1 | 201.9 | 250.9 | — | 204.0 | 116.1 | 139.5 | 26.1 |
| | 2月 | 109.8 | 109.8 | 129.8 | 90.3 | 97.1 | 158.4 | 134.8 | — | 173.3 | 117.8 | 163.0 | 19.3 |
| 【前年同月比(%)】 | 5.5 | 5.5 | 16.1 | 18.7 | 2.0 | 70.5 | 1.8 | — | ▲ 4.3 | 2.6 | 65.8 | ▲ 28.8 | |
| 季 節 調 整 指 数 | 令和4年1月 | 109.2 | 109.2 | 115.7 | 83.1 | 87.4 | 105.9 | 231.4 | — | 198.6 | 142.6 | 79.0 | 28.9 |
| | 2月 | 101.5 | 101.5 | 102.6 | 81.8 | 86.3 | 93.3 | 102.7 | — | 184.9 | 137.1 | 102.5 | 30.1 |
| | 3月 | 94.7 | 94.7 | 84.2 | 66.7 | 89.1 | 109.0 | 151.0 | — | 199.3 | 104.5 | 104.9 | 33.9 |
| | 4月 | 104.8 | 104.9 | 106.1 | 84.1 | 89.5 | 96.9 | 150.8 | — | 205.4 | 110.9 | 125.0 | 63.5 |
| | 5月 | 98.9 | 98.8 | 95.5 | 77.1 | 86.2 | 93.8 | 186.2 | — | 179.8 | 120.1 | 111.9 | 23.8 |
| | 6月 | 97.0 | 97.0 | 92.2 | 61.5 | 92.3 | 92.7 | 114.2 | — | 184.8 | 106.0 | 99.4 | 26.5 |
| | 7月 | 110.1 | 110.0 | 101.6 | 71.1 | 90.6 | 125.4 | 209.1 | — | 198.9 | 106.7 | 128.1 | 21.6 |
| | 8月 | 104.5 | 104.5 | 101.4 | 66.0 | 79.4 | 447.2 | 153.7 | — | 175.3 | 109.0 | 86.1 | 16.6 |
| | 9月 | 105.8 | 105.7 | 104.6 | 71.5 | 92.0 | 198.0 | 186.9 | — | 184.8 | 100.1 | 108.5 | 28.8 |
| | 10月 | 120.1 | 120.1 | 112.2 | 86.9 | 95.5 | 116.8 | 819.3 | — | 184.1 | 95.2 | 95.7 | 22.7 |
| | 11月 | 106.2 | 106.1 | 114.8 | 87.6 | 101.0 | 92.2 | 189.3 | — | 169.7 | 104.3 | 190.9 | 24.9 |
| | 12月 | 112.4 | 112.3 | 114.5 | 89.9 | 95.0 | 296.9 | 192.6 | — | 177.2 | 112.5 | 139.7 | 20.9 |
| | 令和5年1月 | 113.4 | 113.3 | 121.1 | 107.1 | 80.2 | 158.5 | 279.2 | — | 207.0 | 124.0 | 126.6 | 21.8 |
| 2月 | 107.1 | 107.1 | 119.1 | 97.1 | 88.0 | 159.1 | 104.5 | — | 177.0 | 140.7 | 169.9 | 21.5 | |
| 【前月比(%)】 | ▲ 5.6 | ▲ 5.5 | ▲ 1.7 | ▲ 9.3 | 9.7 | 0.4 | ▲ 62.6 | — | ▲ 14.5 | 13.5 | 34.2 | ▲ 1.4 | |

(平成27年=100)

| 窯業・土石製品工業 | 化学工業 | プラスチック製品工業 | パルプ・紙・紙加工品工業 | 繊維工業 | 食料品工業 | その他工業総合 | | | | | | | 鉱業 |
|-----------|---------|------------|--------------|-------|--------|---------|--------|--------|--------|-----|----------|-------|-------|
| | | | | | | | ゴム製品工業 | 皮革製品工業 | 家具工業 | 印刷業 | 木材・木製品工業 | その他工業 | |
| 514.5 | 1,125.9 | 969.8 | 575.8 | 172.2 | 120.8 | 379.7 | 119.8 | 29.0 | 73.4 | — | — | 157.5 | 7.0 |
| 12 | 5 | 12 | 7 | 6 | 4 | 10 | 2 | 2 | 3 | — | — | 3 | 1 |
| 102.9 | 113.5 | 92.1 | 97.5 | 115.0 | 110.3 | 117.4 | 126.7 | 144.3 | 100.2 | — | — | 113.3 | 85.6 |
| 108.9 | 117.0 | 101.3 | 107.1 | 122.5 | 118.8 | 124.8 | 145.6 | 146.4 | 89.6 | — | — | 121.3 | 91.6 |
| 128.9 | 127.3 | 109.5 | 124.9 | 173.9 | 124.0 | 178.0 | 192.4 | 475.9 | 92.2 | — | — | 152.2 | 110.6 |
| 94.8 | 120.9 | 105.0 | 132.1 | 200.9 | 120.4 | 156.9 | 213.7 | 273.2 | 73.7 | — | — | 131.0 | 165.4 |
| 101.3 | 123.2 | 107.3 | 149.2 | 250.1 | 110.5 | 141.6 | 221.0 | 187.7 | 82.2 | — | — | 100.5 | 168.1 |
| 160.5 | 141.2 | 131.3 | 154.0 | 216.6 | 123.7 | 150.6 | 226.5 | 207.3 | 95.2 | — | — | 108.3 | 208.1 |
| 109.7 | 135.3 | 126.2 | 148.3 | 175.6 | 122.0 | 139.5 | 217.4 | 179.9 | 83.8 | — | — | 98.7 | 159.5 |
| 73.2 | 108.3 | 98.9 | 128.9 | 108.0 | 110.0 | 110.7 | 191.5 | 167.9 | 52.8 | — | — | 65.7 | 170.0 |
| 90.7 | 115.7 | 96.7 | 142.6 | 160.8 | 104.3 | 136.5 | 207.1 | 154.3 | 66.8 | — | — | 112.0 | 184.1 |
| 99.5 | 136.1 | 99.5 | 169.8 | 197.0 | 106.6 | 157.4 | 247.8 | 201.9 | 97.0 | — | — | 108.6 | 182.3 |
| 95.4 | 125.5 | 92.0 | 149.7 | 355.8 | 111.9 | 131.9 | 212.9 | 241.6 | 72.7 | — | — | 77.7 | 175.0 |
| 103.6 | 127.8 | 88.9 | 154.5 | 541.7 | 117.6 | 139.2 | 218.9 | 183.7 | 91.0 | — | — | 92.9 | 207.3 |
| 108.6 | 128.1 | 105.3 | 162.4 | 220.8 | 106.4 | 151.0 | 246.4 | 202.1 | 97.7 | — | — | 93.7 | 149.8 |
| 96.2 | 115.2 | 103.1 | 141.0 | 257.5 | 122.0 | 141.3 | 205.8 | 139.8 | 72.6 | — | — | 124.6 | 163.1 |
| 86.5 | 113.6 | 110.5 | 150.9 | 300.0 | 102.1 | 142.0 | 202.8 | 162.3 | 87.7 | — | — | 117.3 | 144.2 |
| 90.6 | 111.7 | 120.0 | 144.8 | 254.6 | 98.8 | 151.8 | 232.4 | 184.9 | 79.3 | — | — | 118.1 | 136.9 |
| 101.3 | 119.7 | 114.9 | 143.5 | 213.0 | 101.1 | 147.6 | 241.9 | 227.2 | 89.7 | — | — | 88.3 | 136.7 |
| 125.4 | 150.5 | 126.1 | 192.8 | 272.6 | 111.6 | 155.2 | 248.2 | 130.2 | 138.8 | — | — | 96.8 | 180.7 |
| 103.4 | 142.1 | 125.0 | 170.1 | 189.8 | 99.8 | 142.3 | 237.4 | 121.3 | 78.9 | — | — | 103.5 | 147.2 |
| ▲ 5.7 | 5.0 | ▲ 1.0 | 14.7 | 8.1 | ▲ 18.2 | 2.0 | 9.2 | ▲ 32.6 | ▲ 5.8 | — | — | 4.9 | ▲ 7.7 |
| 132.9 | 121.3 | 115.1 | 142.4 | 209.4 | 110.0 | 144.6 | 220.7 | 224.5 | 67.3 | — | — | 106.9 | 184.3 |
| 94.3 | 126.8 | 115.1 | 145.3 | 225.4 | 114.1 | 164.6 | 230.1 | 252.5 | 91.5 | — | — | 119.3 | 173.4 |
| 64.1 | 118.7 | 102.5 | 146.4 | 154.0 | 112.2 | 137.0 | 216.2 | 221.9 | 94.5 | — | — | 77.0 | 172.5 |
| 82.7 | 124.0 | 103.0 | 156.6 | 212.6 | 106.8 | 142.0 | 217.5 | 221.7 | 70.3 | — | — | 106.7 | 146.6 |
| 72.6 | 120.1 | 99.7 | 154.8 | 204.0 | 102.0 | 148.7 | 239.3 | 222.4 | 85.9 | — | — | 95.0 | 151.7 |
| 100.6 | 118.1 | 97.3 | 135.2 | 313.0 | 123.2 | 132.1 | 207.3 | 191.4 | 70.8 | — | — | 90.6 | 154.8 |
| 125.0 | 129.1 | 98.9 | 148.7 | 553.8 | 120.5 | 136.6 | 222.4 | 168.9 | 89.7 | — | — | 89.1 | 257.7 |
| 108.5 | 121.9 | 107.1 | 148.4 | 183.9 | 94.6 | 130.4 | 213.0 | 154.6 | 85.7 | — | — | 89.4 | 161.2 |
| 121.0 | 123.0 | 107.5 | 142.4 | 263.6 | 120.7 | 144.1 | 207.9 | 132.7 | 95.7 | — | — | 130.6 | 158.0 |
| 123.4 | 128.2 | 107.7 | 161.5 | 248.8 | 109.0 | 127.3 | 205.4 | 163.5 | 79.3 | — | — | 98.6 | 162.9 |
| 112.9 | 122.6 | 117.9 | 151.0 | 213.7 | 107.5 | 148.4 | 243.5 | 151.0 | 80.8 | — | — | 111.1 | 163.2 |
| 109.4 | 125.8 | 111.2 | 161.1 | 199.5 | 109.2 | 147.7 | 227.6 | 205.9 | 88.9 | — | — | 92.2 | 152.3 |
| 103.9 | 129.3 | 110.6 | 178.3 | 263.5 | 99.2 | 149.1 | 241.8 | 141.0 | 98.1 | — | — | 95.5 | 160.1 |
| 88.9 | 133.1 | 114.0 | 166.6 | 243.6 | 93.3 | 167.9 | 251.2 | 170.3 | 86.2 | — | — | 125.1 | 160.0 |
| ▲ 14.4 | 2.9 | 3.1 | ▲ 6.6 | ▲ 7.6 | ▲ 5.9 | 12.6 | 3.9 | 20.8 | ▲ 12.1 | — | — | 31.0 | ▲ 0.1 |

第2-1表 埼玉県鉱工業 生産指数（特殊分類）

（平成27年=100）

| 項目 | 鉱工業総合 | 最終需要財 | 投資財 | | | 消費財 | | | 生産財 | 鉱工業用生産財 | その他用生産財 | |
|----------------------------|----------|---------|---------|---------|-------|---------|--------|---------|---------|---------|---------|------|
| | | | 資本財 | 建設財 | | 耐久消費財 | 非耐久消費財 | | | | | |
| ウエイト | 10,000.0 | 5,337.0 | 2,175.2 | 1,540.5 | 634.7 | 3,161.8 | 426.1 | 2,735.7 | 4,663.0 | 3,731.3 | 931.7 | |
| 品目数 | 213 | 110 | 68 | 40 | 28 | 42 | 13 | 29 | 103 | 93 | 10 | |
| 原 指 数 | 平成30年平均 | 101.3 | 98.5 | 104.0 | 105.1 | 101.7 | 94.7 | 114.1 | 91.7 | 104.6 | 108.2 | 90.3 |
| | 令和1年平均 | 96.4 | 97.0 | 98.2 | 97.0 | 101.1 | 96.2 | 127.4 | 91.3 | 95.8 | 98.9 | 83.2 |
| | 令和2年平均 | 84.3 | 86.3 | 80.9 | 75.6 | 93.9 | 89.9 | 109.6 | 86.9 | 82.1 | 84.8 | 71.0 |
| | 令和3年平均 | 87.4 | 87.4 | 86.0 | 81.5 | 97.1 | 88.4 | 105.4 | 85.8 | 87.3 | 91.8 | 69.0 |
| | 令和4年平均 | 83.9 | 82.3 | 77.6 | 75.7 | 82.1 | 85.5 | 80.2 | 86.3 | 85.7 | 90.9 | 65.0 |
| | 令和4年1月 | 76.3 | 75.8 | 65.9 | 60.7 | 78.4 | 82.6 | 73.1 | 84.1 | 76.8 | 80.8 | 61.0 |
| | 2月 | 79.7 | 77.7 | 70.5 | 64.5 | 85.0 | 82.7 | 97.6 | 80.4 | 82.0 | 86.3 | 64.6 |
| | 3月 | 93.0 | 91.9 | 99.5 | 105.5 | 85.1 | 86.7 | 114.3 | 82.4 | 94.3 | 100.2 | 70.7 |
| | 4月 | 89.0 | 89.1 | 80.0 | 81.7 | 76.0 | 95.3 | 91.3 | 96.0 | 88.8 | 94.2 | 67.2 |
| | 5月 | 75.4 | 71.3 | 67.6 | 64.6 | 74.8 | 73.9 | 61.6 | 75.8 | 80.0 | 85.0 | 60.0 |
| | 6月 | 95.1 | 94.6 | 96.4 | 99.9 | 87.8 | 93.4 | 94.3 | 93.3 | 95.7 | 103.3 | 65.0 |
| | 7月 | 83.1 | 78.6 | 75.3 | 73.1 | 80.5 | 80.9 | 94.3 | 78.8 | 88.1 | 94.5 | 62.6 |
| | 8月 | 80.4 | 82.1 | 70.6 | 68.0 | 77.0 | 90.0 | 67.6 | 93.4 | 78.4 | 83.3 | 59.0 |
| | 9月 | 81.5 | 77.6 | 80.6 | 78.7 | 85.2 | 75.5 | 73.4 | 75.9 | 85.9 | 90.1 | 69.0 |
| | 10月 | 81.9 | 77.4 | 76.5 | 73.8 | 83.2 | 78.0 | 60.4 | 80.7 | 87.1 | 91.9 | 67.9 |
| | 11月 | 87.9 | 86.6 | 75.0 | 69.9 | 87.5 | 94.6 | 77.8 | 97.2 | 89.3 | 94.7 | 67.8 |
| | 12月 | 83.4 | 84.3 | 72.8 | 68.1 | 84.3 | 92.2 | 56.7 | 97.7 | 82.4 | 86.7 | 65.3 |
| | 令和5年1月 | 72.7 | 73.2 | 75.2 | 75.9 | 73.4 | 71.9 | 48.3 | 75.5 | 72.1 | 75.7 | 57.6 |
| | 2月 | 75.4 | 74.6 | 70.5 | 66.7 | 79.6 | 77.4 | 59.5 | 80.2 | 76.4 | 80.1 | 61.3 |
| 【前年同月比(%)】 | ▲ 5.4 | ▲ 4.0 | 0.0 | 3.4 | ▲ 6.4 | ▲ 6.4 | ▲ 39.0 | ▲ 0.2 | ▲ 6.8 | ▲ 7.2 | ▲ 5.1 | |
| 季 節 調 整 指 数 | 令和4年1月 | 79.9 | 79.0 | 64.2 | 58.1 | 83.2 | 92.0 | 79.6 | 94.4 | 84.4 | 89.1 | 66.1 |
| | 2月 | 83.1 | 81.5 | 70.9 | 65.2 | 85.4 | 86.4 | 91.8 | 86.2 | 84.3 | 88.9 | 65.9 |
| | 3月 | 87.3 | 87.4 | 90.7 | 92.4 | 82.3 | 82.1 | 102.5 | 78.4 | 86.2 | 91.4 | 64.5 |
| | 4月 | 88.8 | 89.4 | 84.1 | 83.6 | 83.3 | 92.6 | 91.6 | 91.6 | 88.5 | 93.7 | 67.6 |
| | 5月 | 81.0 | 78.1 | 78.1 | 76.3 | 81.3 | 79.1 | 74.3 | 79.2 | 84.2 | 88.8 | 65.7 |
| | 6月 | 91.5 | 90.8 | 97.3 | 102.2 | 85.0 | 88.0 | 93.0 | 87.6 | 92.7 | 99.2 | 66.1 |
| | 7月 | 80.7 | 76.5 | 79.2 | 80.1 | 77.3 | 78.1 | 89.5 | 76.5 | 86.6 | 92.2 | 64.4 |
| | 8月 | 88.6 | 89.2 | 75.8 | 73.1 | 81.9 | 98.6 | 76.6 | 100.9 | 87.0 | 92.5 | 65.0 |
| | 9月 | 81.7 | 77.9 | 77.6 | 76.3 | 82.1 | 75.1 | 71.3 | 76.4 | 83.8 | 88.2 | 66.5 |
| | 10月 | 79.6 | 74.2 | 74.0 | 71.5 | 79.6 | 75.3 | 61.9 | 78.0 | 85.4 | 90.6 | 64.3 |
| | 11月 | 83.7 | 82.3 | 71.8 | 68.5 | 83.2 | 90.9 | 71.9 | 94.2 | 84.9 | 90.1 | 64.2 |
| | 12月 | 82.3 | 81.7 | 67.3 | 61.1 | 82.9 | 91.7 | 55.1 | 96.8 | 82.4 | 87.9 | 61.2 |
| | 令和5年1月 | 75.9 | 76.1 | 74.1 | 73.9 | 77.8 | 78.6 | 50.4 | 83.6 | 78.6 | 82.7 | 62.2 |
| | 2月 | 77.7 | 77.3 | 69.5 | 66.0 | 78.9 | 80.8 | 56.7 | 85.6 | 77.9 | 81.7 | 62.4 |
| 【前月比(%)】 | 2.4 | 1.6 | ▲ 6.2 | ▲ 10.7 | 1.4 | 2.8 | 12.5 | 2.4 | ▲ 0.9 | ▲ 1.2 | 0.3 | |

第2-2表 埼玉県鉱工業 出荷指数（特殊分類）

（平成27年＝100）

| 項目 | 鉱工業総合 | 最終需要財 | 投資財 | | 消費財 | | | 生産財 | 鉱工業用生産財 | その他用生産財 | | |
|----------------------------|----------|---------|---------|---------|-------|---------|--------|---------|---------|---------|-------|------|
| | | | 資本財 | 建設財 | | 耐久消費財 | 非耐久消費財 | | | | | |
| ウエイト | 10,000.0 | 5,422.0 | 2,228.5 | 1,510.8 | 717.7 | 3,193.5 | 668.0 | 2,525.5 | 4,578.0 | 4,175.7 | 402.3 | |
| 品目数 | 213 | 110 | 68 | 40 | 28 | 42 | 13 | 29 | 103 | 93 | 10 | |
| 原 指 数 | 平成30年平均 | 102.2 | 99.7 | 99.1 | 98.1 | 101.2 | 100.2 | 103.0 | 99.4 | 105.1 | 106.4 | 91.1 |
| | 令和1年平均 | 96.2 | 95.6 | 94.7 | 92.7 | 99.0 | 96.3 | 92.9 | 97.2 | 97.0 | 98.2 | 84.4 |
| | 令和2年平均 | 82.8 | 83.6 | 78.9 | 72.5 | 92.4 | 86.9 | 63.7 | 93.0 | 81.9 | 82.8 | 72.8 |
| | 令和3年平均 | 85.1 | 84.1 | 81.8 | 75.0 | 96.0 | 85.8 | 57.9 | 93.1 | 86.2 | 87.7 | 70.5 |
| | 令和4年平均 | 83.6 | 81.9 | 77.6 | 74.2 | 84.6 | 84.9 | 52.3 | 93.5 | 85.7 | 87.5 | 67.2 |
| | 令和4年1月 | 73.5 | 72.3 | 67.2 | 61.9 | 78.4 | 75.9 | 39.9 | 85.5 | 74.8 | 76.0 | 62.2 |
| | 2月 | 78.4 | 76.3 | 72.5 | 65.9 | 86.5 | 78.9 | 51.5 | 86.2 | 80.9 | 82.2 | 67.2 |
| | 3月 | 94.3 | 94.3 | 97.1 | 99.5 | 91.9 | 92.4 | 72.3 | 97.7 | 94.2 | 96.1 | 74.8 |
| | 4月 | 84.9 | 83.6 | 77.7 | 77.5 | 78.1 | 87.7 | 42.4 | 99.7 | 86.5 | 88.0 | 70.5 |
| | 5月 | 76.5 | 73.1 | 68.1 | 64.2 | 76.5 | 76.5 | 42.9 | 85.4 | 80.7 | 82.6 | 60.8 |
| | 6月 | 90.7 | 86.1 | 91.3 | 90.5 | 93.0 | 82.4 | 59.6 | 88.4 | 96.2 | 99.0 | 66.5 |
| | 7月 | 84.5 | 81.3 | 76.0 | 72.0 | 84.5 | 85.0 | 61.1 | 91.3 | 88.3 | 90.7 | 64.0 |
| | 8月 | 79.3 | 78.5 | 74.2 | 71.4 | 80.1 | 81.5 | 48.5 | 90.2 | 80.2 | 82.1 | 60.3 |
| | 9月 | 81.7 | 77.8 | 77.0 | 73.3 | 85.0 | 78.2 | 49.3 | 85.9 | 86.3 | 87.9 | 70.2 |
| | 10月 | 90.0 | 92.3 | 75.3 | 71.2 | 84.0 | 104.2 | 47.8 | 119.1 | 87.3 | 89.0 | 69.7 |
| | 11月 | 85.7 | 82.2 | 75.4 | 69.1 | 88.6 | 86.9 | 64.6 | 92.8 | 89.9 | 91.8 | 70.4 |
| | 12月 | 84.0 | 84.6 | 78.8 | 74.2 | 88.7 | 88.7 | 47.5 | 99.5 | 83.3 | 84.6 | 69.5 |
| | 令和5年1月 | 73.3 | 74.4 | 72.5 | 72.2 | 73.2 | 75.6 | 39.9 | 85.1 | 72.0 | 73.3 | 59.3 |
| | 2月 | 78.2 | 77.8 | 71.4 | 66.7 | 81.2 | 82.3 | 54.3 | 89.7 | 78.6 | 80.0 | 63.9 |
| 【前年同月比(%)】 | ▲ 0.3 | 2.0 | ▲ 1.5 | 1.2 | ▲ 6.1 | 4.3 | 5.4 | 4.1 | ▲ 2.8 | ▲ 2.7 | ▲ 4.9 | |
| 季 節 調 整 指 数 | 令和4年1月 | 78.9 | 77.6 | 69.4 | 62.0 | 85.4 | 83.7 | 45.8 | 94.7 | 81.3 | 82.6 | 67.8 |
| | 2月 | 81.3 | 80.7 | 74.3 | 67.9 | 87.4 | 85.0 | 48.8 | 95.5 | 82.6 | 83.9 | 68.3 |
| | 3月 | 86.0 | 86.7 | 89.1 | 88.6 | 85.4 | 85.0 | 61.2 | 91.2 | 85.7 | 87.4 | 66.7 |
| | 4月 | 84.9 | 84.0 | 84.4 | 83.1 | 86.5 | 84.9 | 46.5 | 95.3 | 85.9 | 87.5 | 68.9 |
| | 5月 | 85.0 | 81.1 | 79.1 | 74.9 | 87.0 | 82.3 | 52.5 | 89.2 | 88.9 | 91.0 | 68.2 |
| | 6月 | 89.0 | 84.3 | 90.2 | 89.3 | 90.7 | 80.1 | 55.8 | 86.4 | 93.7 | 96.1 | 68.2 |
| | 7月 | 83.8 | 81.1 | 78.1 | 75.5 | 81.5 | 84.2 | 62.7 | 89.3 | 86.9 | 88.9 | 67.0 |
| | 8月 | 85.0 | 83.2 | 80.4 | 78.5 | 84.1 | 85.6 | 56.5 | 92.6 | 87.5 | 89.4 | 67.7 |
| | 9月 | 80.2 | 75.4 | 71.0 | 68.9 | 80.4 | 76.5 | 45.8 | 85.2 | 84.9 | 86.6 | 68.3 |
| | 10月 | 88.4 | 90.7 | 74.6 | 71.0 | 82.2 | 101.6 | 47.1 | 115.6 | 85.8 | 87.7 | 67.1 |
| | 11月 | 82.0 | 79.7 | 71.1 | 67.1 | 82.3 | 85.6 | 58.3 | 92.8 | 85.0 | 86.8 | 66.5 |
| | 12月 | 80.4 | 79.3 | 70.6 | 64.5 | 85.8 | 86.2 | 45.9 | 96.7 | 82.1 | 83.9 | 63.3 |
| | 令和5年1月 | 78.4 | 79.7 | 75.7 | 73.2 | 80.6 | 82.4 | 44.3 | 93.5 | 77.6 | 79.0 | 64.3 |
| | 2月 | 80.0 | 81.0 | 71.7 | 67.4 | 80.6 | 87.8 | 51.1 | 98.5 | 79.3 | 80.7 | 64.6 |
| 【前月比(%)】 | 2.0 | 1.6 | ▲ 5.3 | ▲ 7.9 | 0.0 | 6.6 | 15.3 | 5.3 | 2.2 | 2.2 | 0.5 | |

第2-3表 埼玉県鉱工業 在庫指数（特殊分類）

（平成27年=100）

| 項目 | 鉱工業総合 | 最終需要財 | 投資財 | | | 消費財 | | | 生産財 | 鉱工業用生産財 | その他用生産財 | |
|----------------------------|------------|---------|---------|---------|---------|---------|---------|-------|---------|---------|---------|-------|
| | | | 資本財 | 建設財 | | 耐久消費財 | 非耐久消費財 | | | | | |
| ウエイト | 10,000.0 | 4,851.1 | 2,721.5 | 1,358.1 | 1,363.4 | 2,129.6 | 1,767.8 | 361.8 | 5,148.9 | 5,037.0 | 111.9 | |
| 品目数 | 115 | 55 | 37 | 17 | 20 | 18 | 9 | 9 | 60 | 57 | 3 | |
| 原 指 数 | 平成30年末 | 88.5 | 66.7 | 83.1 | 82.2 | 84.0 | 45.8 | 31.6 | 115.5 | 109.1 | 109.3 | 96.0 |
| | 令和1年末 | 88.3 | 72.1 | 90.3 | 84.7 | 95.9 | 48.9 | 34.0 | 121.5 | 103.6 | 104.0 | 88.0 |
| | 令和2年末 | 84.5 | 64.8 | 79.2 | 69.7 | 88.7 | 46.2 | 29.6 | 127.5 | 103.1 | 103.5 | 87.3 |
| | 令和3年末 | 87.7 | 70.4 | 84.9 | 72.9 | 96.8 | 51.9 | 37.8 | 120.4 | 104.0 | 104.4 | 85.3 |
| | 令和4年末 | 84.4 | 59.9 | 71.1 | 75.5 | 66.8 | 45.6 | 30.3 | 120.5 | 107.4 | 108.0 | 78.7 |
| | 令和4年1月 | 84.5 | 60.4 | 72.1 | 74.0 | 70.2 | 45.4 | 29.9 | 121.1 | 107.3 | 107.8 | 84.7 |
| | 2月末 | 84.9 | 62.9 | 75.6 | 80.2 | 70.9 | 46.8 | 31.4 | 122.2 | 105.5 | 106.1 | 81.1 |
| | 3月末 | 80.5 | 56.8 | 68.8 | 73.3 | 64.3 | 41.5 | 26.5 | 115.1 | 102.8 | 103.5 | 69.0 |
| | 4月末 | 81.8 | 57.8 | 69.1 | 75.3 | 63.0 | 43.2 | 29.3 | 111.6 | 104.4 | 105.3 | 65.8 |
| | 5月末 | 81.9 | 56.1 | 69.7 | 74.4 | 65.1 | 38.8 | 23.5 | 113.3 | 106.2 | 107.0 | 69.9 |
| | 6月末 | 83.3 | 56.7 | 68.8 | 72.6 | 65.1 | 41.2 | 25.4 | 118.7 | 108.4 | 109.1 | 74.8 |
| | 7月末 | 83.7 | 59.0 | 73.6 | 80.8 | 66.5 | 40.2 | 24.7 | 116.4 | 107.1 | 107.8 | 75.2 |
| | 8月末 | 83.0 | 58.4 | 72.2 | 80.6 | 63.8 | 40.8 | 26.1 | 112.5 | 106.2 | 106.9 | 75.3 |
| | 9月末 | 82.0 | 57.8 | 71.3 | 75.4 | 67.1 | 40.6 | 24.9 | 117.4 | 104.8 | 105.3 | 80.9 |
| | 10月末 | 83.1 | 58.0 | 72.7 | 76.0 | 69.5 | 39.3 | 23.1 | 118.2 | 106.8 | 107.3 | 81.2 |
| | 11月末 | 85.6 | 62.0 | 75.6 | 80.5 | 70.6 | 44.6 | 28.4 | 123.9 | 107.8 | 108.4 | 81.9 |
| | 12月末 | 84.4 | 59.9 | 71.1 | 75.5 | 66.8 | 45.6 | 30.3 | 120.5 | 107.4 | 108.0 | 78.7 |
| | 令和5年1月末 | 88.4 | 64.7 | 77.5 | 86.8 | 68.2 | 48.4 | 34.1 | 118.5 | 110.6 | 111.3 | 77.9 |
| | 2月末 | 88.5 | 66.9 | 80.8 | 93.7 | 68.0 | 49.2 | 35.3 | 116.9 | 108.8 | 109.5 | 76.1 |
| | 【前年同月比(%)】 | 4.2 | 6.4 | 6.9 | 16.8 | ▲ 4.1 | 5.1 | 12.4 | ▲ 4.3 | 3.1 | 3.2 | ▲ 6.2 |
| 季 節 調 整 指 数 | 令和4年1月 | 83.6 | 57.8 | 71.5 | 73.5 | 69.3 | 40.3 | 25.1 | 114.8 | 107.5 | 108.1 | 80.8 |
| | 2月末 | 85.4 | 61.4 | 73.8 | 79.2 | 69.6 | 45.5 | 30.0 | 120.4 | 107.1 | 107.8 | 78.8 |
| | 3月末 | 84.4 | 62.2 | 74.6 | 82.0 | 66.1 | 47.8 | 31.6 | 119.1 | 105.2 | 105.9 | 71.0 |
| | 4月末 | 84.5 | 60.4 | 71.3 | 78.2 | 64.8 | 46.7 | 31.9 | 119.3 | 106.7 | 107.4 | 72.7 |
| | 5月末 | 81.4 | 56.0 | 68.8 | 74.1 | 63.8 | 39.3 | 23.0 | 119.6 | 105.7 | 106.4 | 73.6 |
| | 6月末 | 82.3 | 56.8 | 68.6 | 73.1 | 64.1 | 41.3 | 25.5 | 122.0 | 106.2 | 106.8 | 77.7 |
| | 7月末 | 81.4 | 57.4 | 70.0 | 77.2 | 63.9 | 40.1 | 24.6 | 117.6 | 104.0 | 104.6 | 75.5 |
| | 8月末 | 82.4 | 56.9 | 69.4 | 76.0 | 62.5 | 41.1 | 26.0 | 116.0 | 106.6 | 107.2 | 77.4 |
| | 9月末 | 82.7 | 59.2 | 72.0 | 75.9 | 68.2 | 43.5 | 28.9 | 118.6 | 104.9 | 105.4 | 80.3 |
| | 10月末 | 82.6 | 58.0 | 72.1 | 73.7 | 69.5 | 40.0 | 24.4 | 114.3 | 106.2 | 106.8 | 77.5 |
| | 11月末 | 84.3 | 61.9 | 76.7 | 80.8 | 72.6 | 43.2 | 28.0 | 117.3 | 105.7 | 106.4 | 75.9 |
| | 12月末 | 83.9 | 58.4 | 72.2 | 74.9 | 68.9 | 40.8 | 26.4 | 112.3 | 108.9 | 109.6 | 76.3 |
| | 令和5年1月末 | 87.4 | 61.9 | 76.8 | 86.2 | 67.3 | 43.0 | 28.6 | 112.4 | 110.8 | 111.6 | 74.4 |
| | 2月末 | 89.0 | 65.3 | 78.8 | 92.5 | 66.8 | 47.9 | 33.8 | 115.2 | 110.5 | 111.2 | 74.0 |
| 【前月比(%)】 | 1.8 | 5.5 | 2.6 | 7.3 | ▲ 0.7 | 11.4 | 18.2 | 2.5 | ▲ 0.3 | ▲ 0.4 | ▲ 0.5 | |

第2-4表 埼玉県鉱工業 在庫率指数（特殊分類）

（平成27年=100）

| 項目 | 鉱工業総合 | 最終需要財 | 投資財 | | | 消費財 | | | 生産財 | 鉱工業用生産財 | その他用生産財 | |
|----------------------------|------------|---------|---------|--------|---------|---------|---------|-------|---------|---------|---------|-------|
| | | | 資本財 | 建設財 | 消費財 | 耐久消費財 | 非耐久消費財 | | | | | |
| | | | | | | | | | | | | |
| ウエイト | 9,104.0 | 4,338.4 | 2,208.8 | 845.4 | 1,363.4 | 2,129.6 | 1,767.8 | 361.8 | 4,765.6 | 4653.7 | 111.9 | |
| 品目数 | 109 | 52 | 34 | 14 | 20 | 18 | 9 | 9 | 57 | 54 | 3 | |
| 原 指 数 | 平成30年平均 | 91.9 | 79.1 | 98.8 | 106.2 | 94.2 | 58.7 | 46.9 | 116.2 | 103.6 | 103.8 | 94.3 |
| | 令和1年平均 | 96.0 | 80.0 | 106.3 | 119.1 | 98.3 | 52.7 | 38.3 | 123.0 | 110.7 | 111.0 | 98.8 |
| | 令和2年平均 | 107.3 | 87.0 | 117.7 | 126.1 | 112.6 | 55.0 | 35.1 | 152.4 | 125.9 | 125.8 | 128.3 |
| | 令和3年平均 | 106.4 | 91.8 | 118.3 | 152.3 | 97.2 | 64.2 | 44.0 | 163.1 | 119.8 | 119.8 | 116.6 |
| | 令和4年平均 | 105.4 | 80.7 | 96.0 | 131.2 | 74.2 | 64.8 | 40.1 | 185.3 | 128.0 | 128.7 | 97.4 |
| | 令和4年1月 | 118.3 | 98.9 | 119.1 | 143.7 | 103.9 | 77.9 | 59.2 | 169.6 | 136.0 | 136.6 | 111.1 |
| | 2月 | 104.1 | 78.8 | 91.1 | 107.0 | 81.2 | 66.0 | 48.4 | 152.3 | 127.2 | 127.6 | 109.0 |
| | 3月 | 80.8 | 51.9 | 62.8 | 69.9 | 58.4 | 40.5 | 26.3 | 110.0 | 107.2 | 108.1 | 69.7 |
| | 4月 | 107.4 | 90.5 | 111.7 | 182.3 | 68.0 | 68.5 | 56.3 | 128.0 | 122.8 | 123.9 | 77.1 |
| | 5月 | 113.9 | 87.8 | 117.0 | 184.9 | 75.0 | 57.5 | 35.4 | 165.2 | 137.6 | 138.5 | 101.3 |
| | 6月 | 98.9 | 73.0 | 73.4 | 85.8 | 65.6 | 72.6 | 37.3 | 245.0 | 122.6 | 123.4 | 89.2 |
| | 7月 | 107.7 | 88.2 | 90.8 | 119.1 | 73.3 | 85.5 | 35.9 | 328.1 | 125.4 | 126.1 | 99.5 |
| | 8月 | 115.4 | 72.3 | 83.6 | 101.2 | 72.7 | 60.7 | 37.8 | 172.5 | 154.6 | 155.7 | 110.8 |
| | 9月 | 96.7 | 67.9 | 74.5 | 80.3 | 70.8 | 61.1 | 33.6 | 195.3 | 122.9 | 123.2 | 109.3 |
| | 10月 | 114.7 | 106.3 | 149.5 | 275.5 | 71.4 | 61.5 | 31.5 | 208.3 | 122.4 | 123.0 | 97.3 |
| | 11月 | 100.2 | 77.3 | 91.0 | 119.5 | 73.3 | 63.2 | 37.8 | 187.3 | 121.1 | 121.7 | 94.9 |
| | 12月 | 107.0 | 75.1 | 87.4 | 104.9 | 76.6 | 62.4 | 42.0 | 162.2 | 135.9 | 136.8 | 99.0 |
| | 令和5年1月 | 122.8 | 94.4 | 111.5 | 149.0 | 88.3 | 76.6 | 52.1 | 196.2 | 148.6 | 149.7 | 103.7 |
| | 2月 | 109.8 | 79.1 | 90.0 | 109.2 | 78.1 | 67.8 | 49.6 | 156.6 | 137.7 | 138.6 | 102.9 |
| | 【前年同月比(%)】 | 5.5 | 0.4 | ▲ 1.2 | 2.1 | ▲ 3.8 | 2.7 | 2.5 | 2.8 | 8.3 | 8.6 | ▲ 5.6 |
| 季 節 調 整 指 数 | 令和4年1月 | 109.2 | 90.3 | 109.3 | 138.2 | 84.7 | 69.1 | 48.8 | 163.5 | 127.2 | 127.7 | 103.2 |
| | 2月 | 101.5 | 75.2 | 82.8 | 106.8 | 73.6 | 71.4 | 51.2 | 170.3 | 127.6 | 127.9 | 112.0 |
| | 3月 | 94.7 | 62.9 | 71.2 | 109.3 | 57.5 | 57.5 | 38.6 | 139.7 | 120.0 | 120.9 | 81.9 |
| | 4月 | 104.8 | 80.8 | 93.2 | 133.0 | 65.2 | 75.1 | 56.5 | 163.0 | 128.7 | 129.4 | 89.3 |
| | 5月 | 98.9 | 71.6 | 91.3 | 133.0 | 62.3 | 52.9 | 29.3 | 169.5 | 123.9 | 124.5 | 103.1 |
| | 6月 | 97.0 | 72.8 | 75.7 | 87.1 | 68.7 | 66.6 | 39.2 | 221.8 | 120.2 | 120.5 | 96.9 |
| | 7月 | 110.1 | 93.3 | 97.3 | 127.9 | 77.6 | 86.1 | 34.7 | 335.7 | 124.6 | 125.4 | 95.8 |
| | 8月 | 104.5 | 65.9 | 78.1 | 93.5 | 70.4 | 51.0 | 30.4 | 150.4 | 141.7 | 142.9 | 97.2 |
| | 9月 | 105.8 | 82.3 | 93.3 | 107.9 | 83.5 | 68.4 | 41.4 | 200.4 | 125.1 | 125.7 | 102.6 |
| | 10月 | 120.1 | 115.3 | 174.0 | 294.4 | 84.5 | 61.6 | 35.0 | 182.9 | 125.5 | 126.5 | 94.6 |
| | 11月 | 106.2 | 83.6 | 103.5 | 129.1 | 86.6 | 61.4 | 40.4 | 161.0 | 126.1 | 127.1 | 88.4 |
| | 12月 | 112.4 | 77.3 | 93.0 | 109.8 | 82.2 | 59.3 | 39.1 | 158.6 | 144.0 | 145.2 | 100.3 |
| | 令和5年1月 | 113.4 | 86.1 | 102.4 | 143.3 | 72.0 | 67.9 | 42.9 | 189.1 | 139.0 | 140.0 | 96.3 |
| | 2月 | 107.1 | 75.5 | 81.8 | 109.0 | 70.8 | 73.4 | 52.4 | 175.1 | 138.1 | 138.9 | 105.7 |
| 【前月比(%)】 | ▲ 5.6 | ▲ 12.3 | ▲ 20.1 | ▲ 23.9 | ▲ 1.7 | 8.1 | 22.1 | ▲ 7.4 | ▲ 0.6 | ▲ 0.8 | 9.8 | |

－ 利 用 上 の 注 意 －

基準年次 平成27年（2015年）
採用品目 生産201品目、出荷201品目、在庫108品目
季節調整 センサス局法（X-12-ARIMA）

この情報は、インターネットでも御覧になれます。



<https://www.pref.saitama.lg.jp/theme/tokei/index.html>

令和5年4月発行
埼玉県総務部統計課 経済分析担当
〒330-9301 さいたま市浦和区高砂3-15-1
TEL 048-830-2327（直通）
FAX 048-822-3758